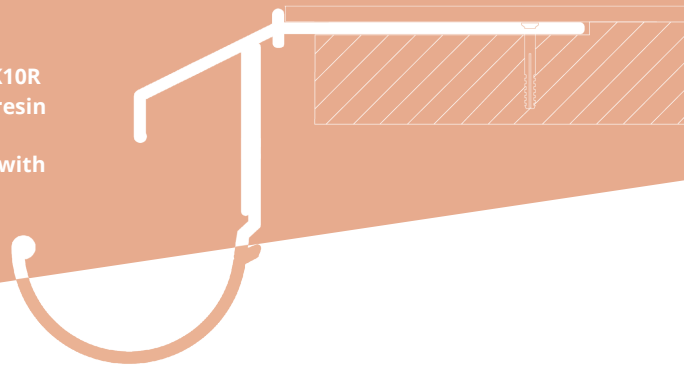


# Renoplast K10R

## DRIP EDGE

K10R drip edge is part of BASIC K10R system used with 2-3 mm thick resin flooring systems. K10R drip edges are compatible with Renoplast R50 gutter system.



### KEY FEATURES

- cost-effective profile, carefully shaped to ensure efficient evacuation of water from terraces, patios and balconies
- watertight barrier at eaves
- durable and fully corrosion-resistant
- compatible with Renoplast R50 round gutters

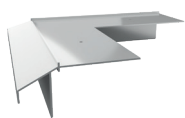
### TECHNICAL DATA

<b>BODY</b>	made of AW 6060 aluminium alloy
<b>WEIGHT</b>	aprox. 500 g/m <sup>2</sup>
<b>COATING</b>	consisting of 0.6 - 1.2 g/m <sup>2</sup> conversion coating and min. 60 µm polyester powder coating

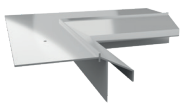
### INSTALLATION TOOLS

You will need the following tools: folding ruler, spirit level, knife, electric drill, hand-held mixer, steel plastering trowel, string line, pencil, spatula, metal handsaw or circular saw. Circular saw should be equipped with an aluminium cutting blade to cut without damaging the coating.

### AUXILIARY COMPONENTS



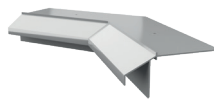
**K10R 90**  
EXTERNAL CORNER



**K10R 90**  
INTERNAL CORNER



**K10R 135**  
EXTERNAL CORNER



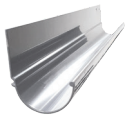
**K10R 135**  
INTERNAL CORNER



**LK10/LK100**  
AND **LK10R/**  
**LK100R DRIP**  
**EDGE CLIP**



**OPK10/OPK100/OP10R/**  
**OP100R R+L WALL**  
**PROTECTION END CAPS**



**R50 ROUND**  
**GUTTER**

### SUBSTRATE

The substrate must be sound, level, clean and dry. Cement screeds must reach the minimum compressive strength required by the resin manufacturer after 28 days of curing.

### AMBIENT CONDITIONS DURING INSTALLATION

The ambient conditions should be as typically required for waterproofing and installation work.

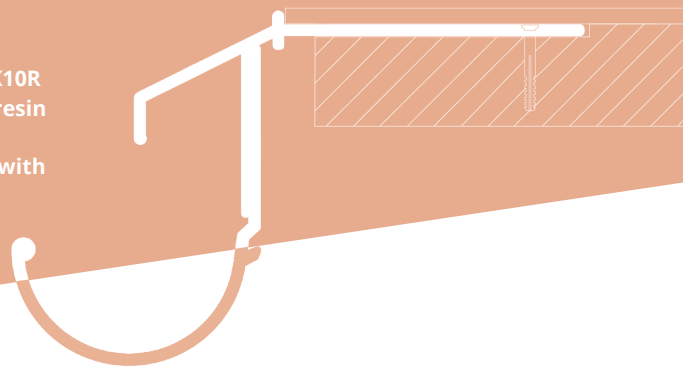
### COLOURS

Standard colours: dusty grey RAL 7037, graphite grey RAL 7024, grey brown RAL 8019. Other colours from RAL Classic chart are available on request.

# Renoplast K10R

## DRIP EDGE

K10R drip edge is part of BASIC K10R system used with 2-3 mm thick resin flooring systems. K10R drip edges are compatible with Renoplast R50 gutter system.



### INSTALLATION

Drip edges should be set on appropriate resin or flexible sealant and secured in place with wall plugs. Follow the installation guide available at: <https://renoplast.pl/en/dev/renoplast/system/32>.



INSTALLATION GUIDE

### INSTALLATION GUIDELINES

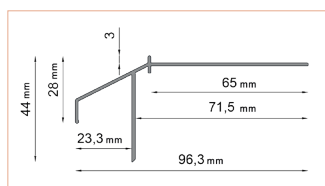
Protect the paint coat from damage during installation. Reject damaged components. Any dirt should be removed from the surfaces using water and non-abrasive cloth. Wet materials, such as sealing slurry or tile adhesive should be removed from outer surfaces before drying. The manufacturer shall not be liable for any damage resulting from product misuse or using inadequate auxiliary materials or tools. All work must be in compliance with construction plans, product data sheet, relevant standards, good construction practice and safety requirements.

### MAINTENANCE GUIDELINES

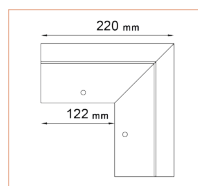
During use clean the trims at least twice a year. For cleaning use clean water and non-abrasive cloth. Do not use highly acidic or highly alkaline cleaners or surfactants which may react with aluminium. Do not use organic solvents containing esters, ketones, aromatic compounds, glycol esters, chlorinated hydrocarbons, etc. After cleaning rinse the surfaces with cold clean water. Do not use salt or other de-icing chemicals near the trims. We recommend to check the condition of the relevant terrace, patio and balcony components every six months. Immediately remove any defects.

### DIMENSIONS

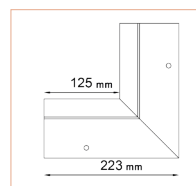
#### CROSS-SECTION:



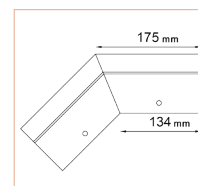
K10R DRIP EDGE



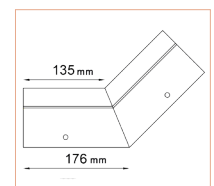
K10R 90  
EXTERNAL CORNER



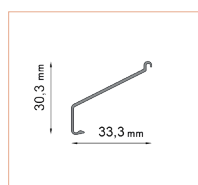
K10R 90  
INTERNAL CORNER



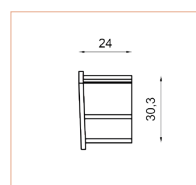
K10R 135  
EXTERNAL CORNER



K10R 135  
INTERNAL CORNER



LK10/LK100 AND  
LK10R/LK100R  
DRIP EDGE CLIP

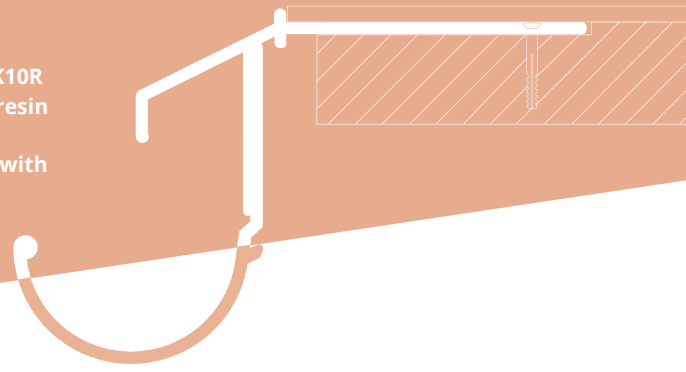


OPK10/OPK100/OP10R/  
OP100R R+L WALL  
PROTECTION END CAPS

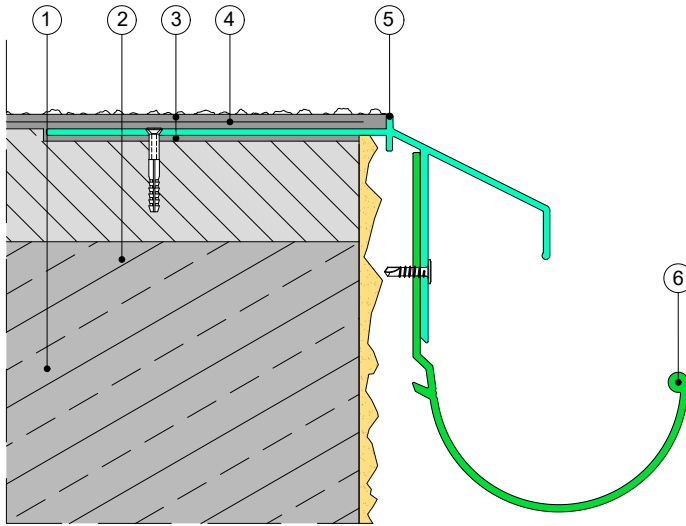
# Renoplast K10R

## DRIP EDGE

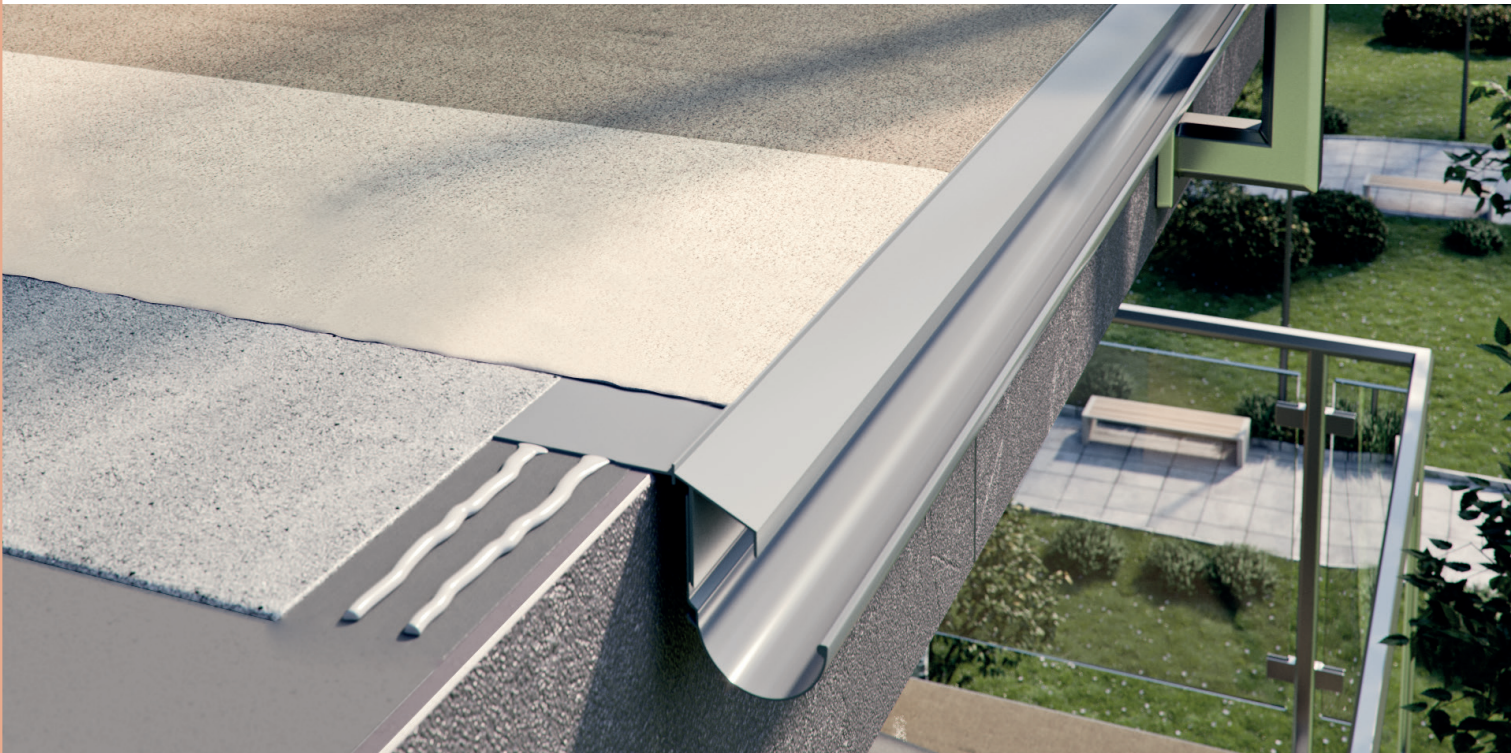
K10R drip edge is part of BASIC K10R system used with 2-3 mm thick resin flooring systems. K10R drip edges are compatible with Renoplast R50 gutter system.



### INSTALLATION EXAMPLE



1. Structural slab
2. 1.5-2% sloping layer
3. Resin flooring layer(s) with slip-resistant broadcast additive
4. Reinforcing tape/ nonwoven recommended by the resin manufacturer
5. K10R drip edge
6. R50 round gutter



#### Notes:

Edition: 6.02.2026 This product brochure supersedes all previous editions. It gives recommendations for standard application conditions only, and thus must not be used in place of installation drawings. Suitability of our products for particular conditions should be verified by the contractor. The actual product specifications may vary slightly due to allowable process or tool dimension changes. Materials used in combination with Renoplast products must be obtained from reputable sources. Our liability for any omissions or inaccuracies of the data given in this brochure is limited to gross disinformation or negligence.

**Renoplast**

RENOPLAST Sp. z o.o.  
phone: +48 697 635 580  
office@renoplast.pl  
www.renoplast.pl/en

