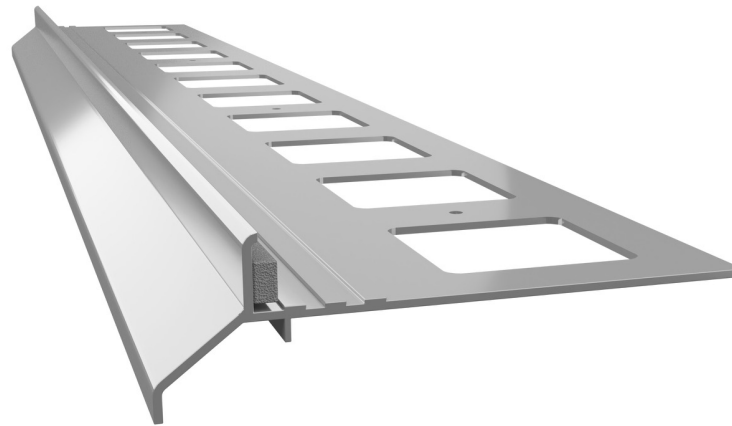
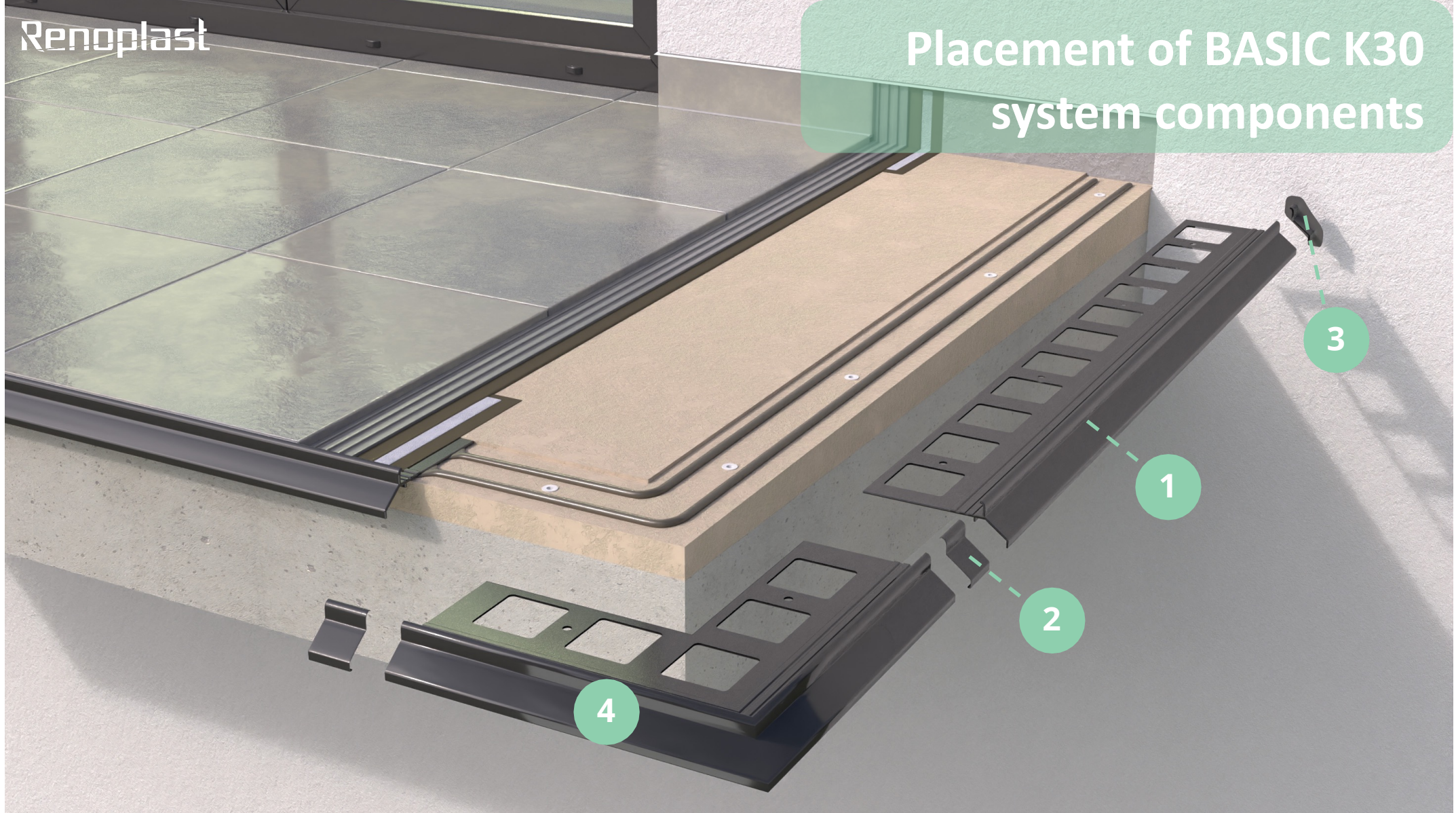


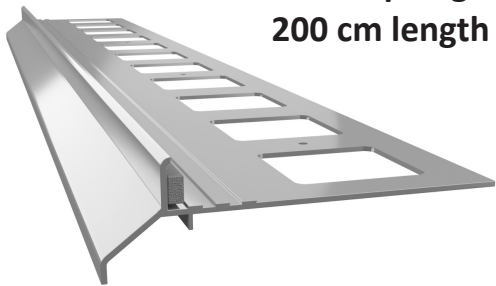
BASIC K30 system installation guide for balconies, patios and terraces surfaced with porcelain pavers fixed with adhesive



Placement of BASIC K30 system components



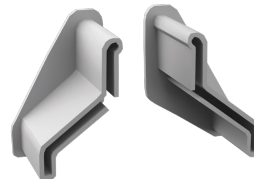
K30 drip edge
200 cm length



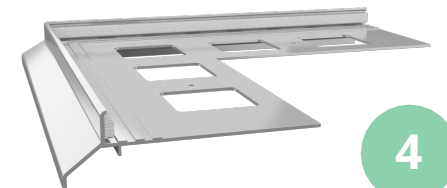
LK30/LK40
drip edge clip

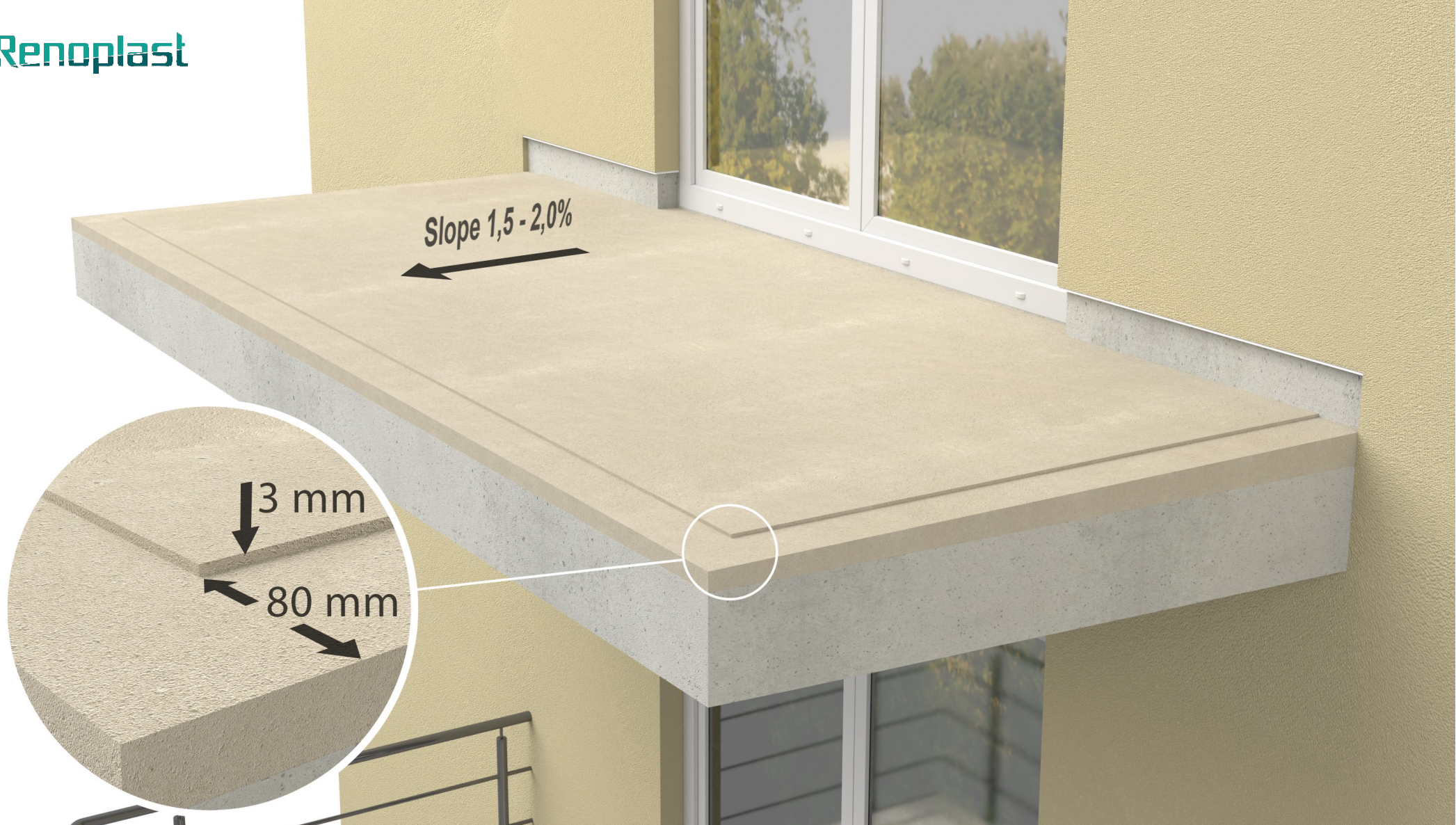


OPK30/OPK40 R+L
wall protection end caps



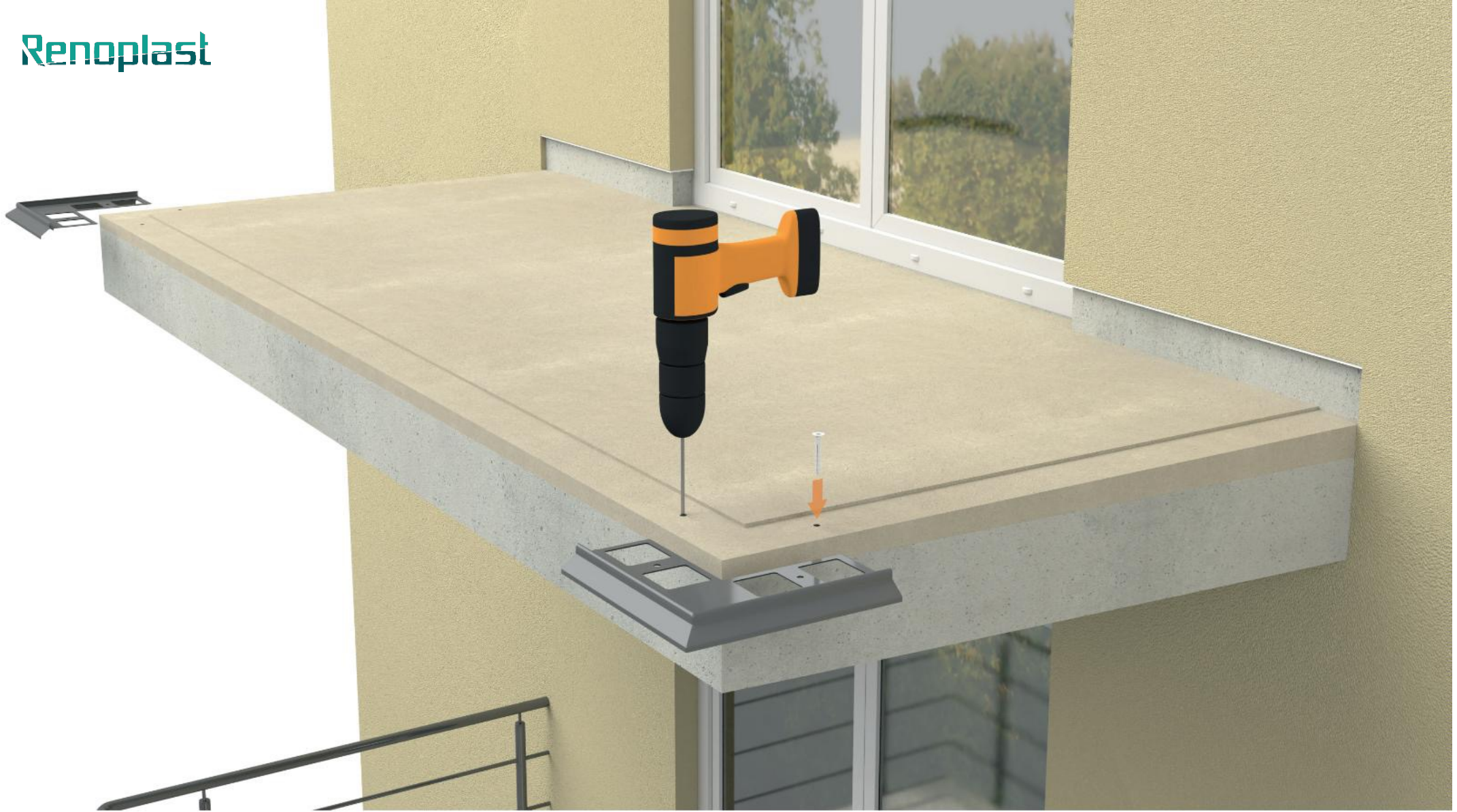
K30 90 external
corner





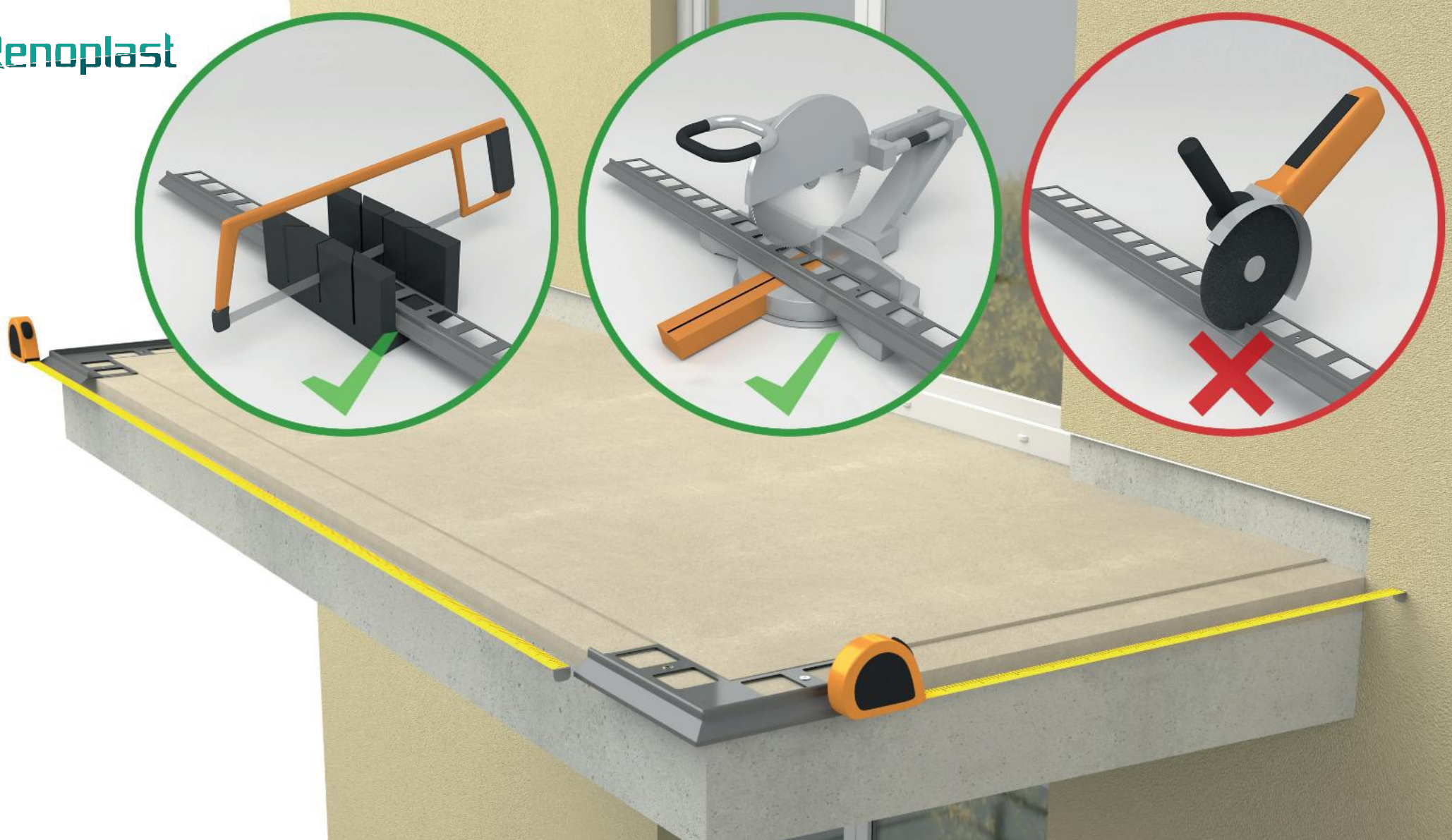
Balcony/terrace floor screed

The floor screed should be structurally sound and even, sloping 1.5 – 2% towards the balcony/terrace front edge. Along the balcony/terrace edge a 3 mm deep by 80 mm wide recess should be made in the screed to allow setting the drip edge flush with the screed top surface.



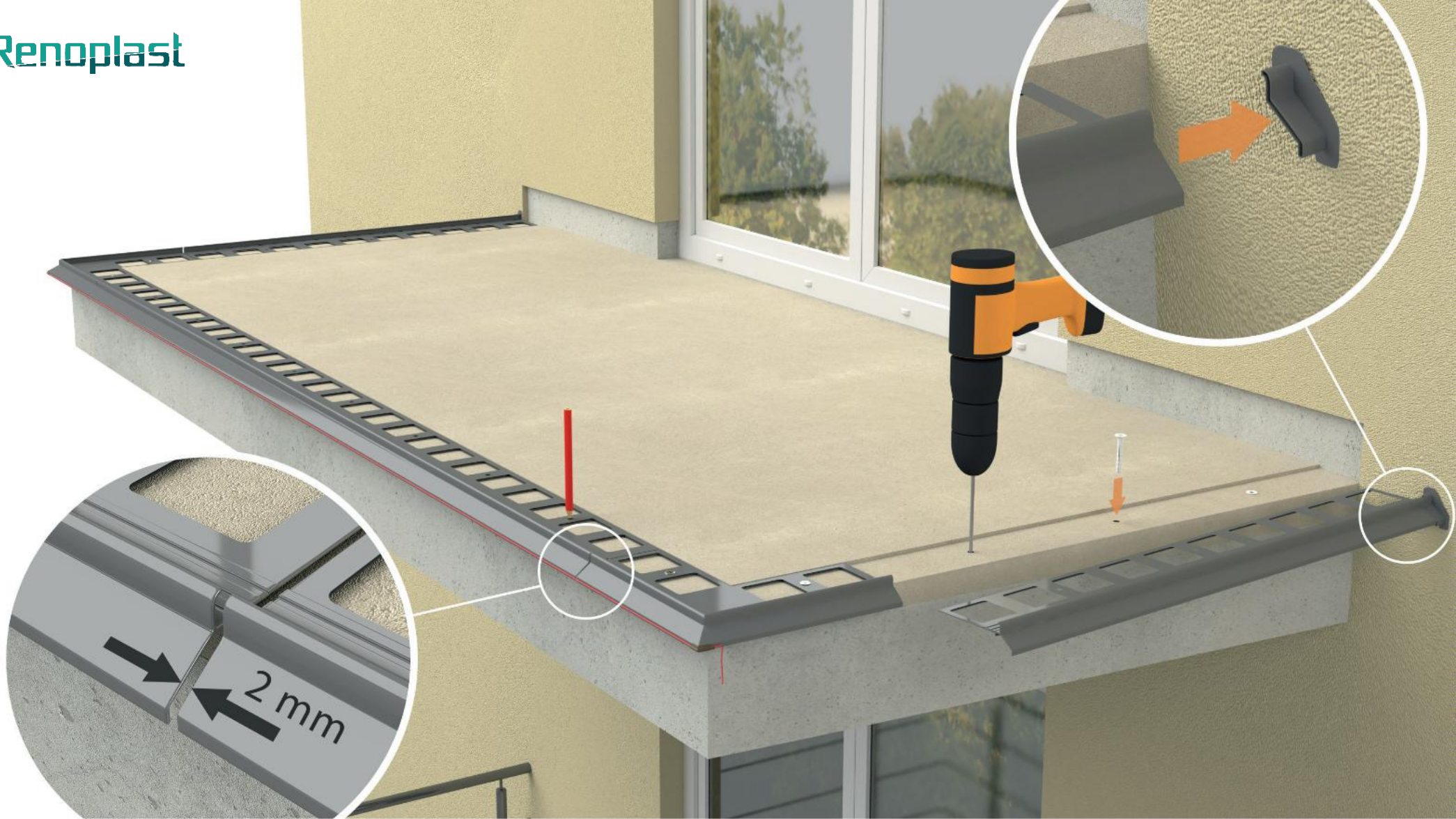
Pre-fitting K30 90 external corners

Start the installation by pre-fitting the external corners using the supplied plastic wall plugs.



Preparation of K30 drip edges

Measure straight lengths to cut the straight sections to the required length. Allow for ca. 2 mm wide expansion joints between adjacent drip edging sections. At walls leave sufficient space for fitting **OPK30/OPK40 wall protection end caps**. For cutting use a metal handsaw or a circular saw equipped with an aluminium cutting disc. Other tools may damage the paint coat, which is considered unacceptable.



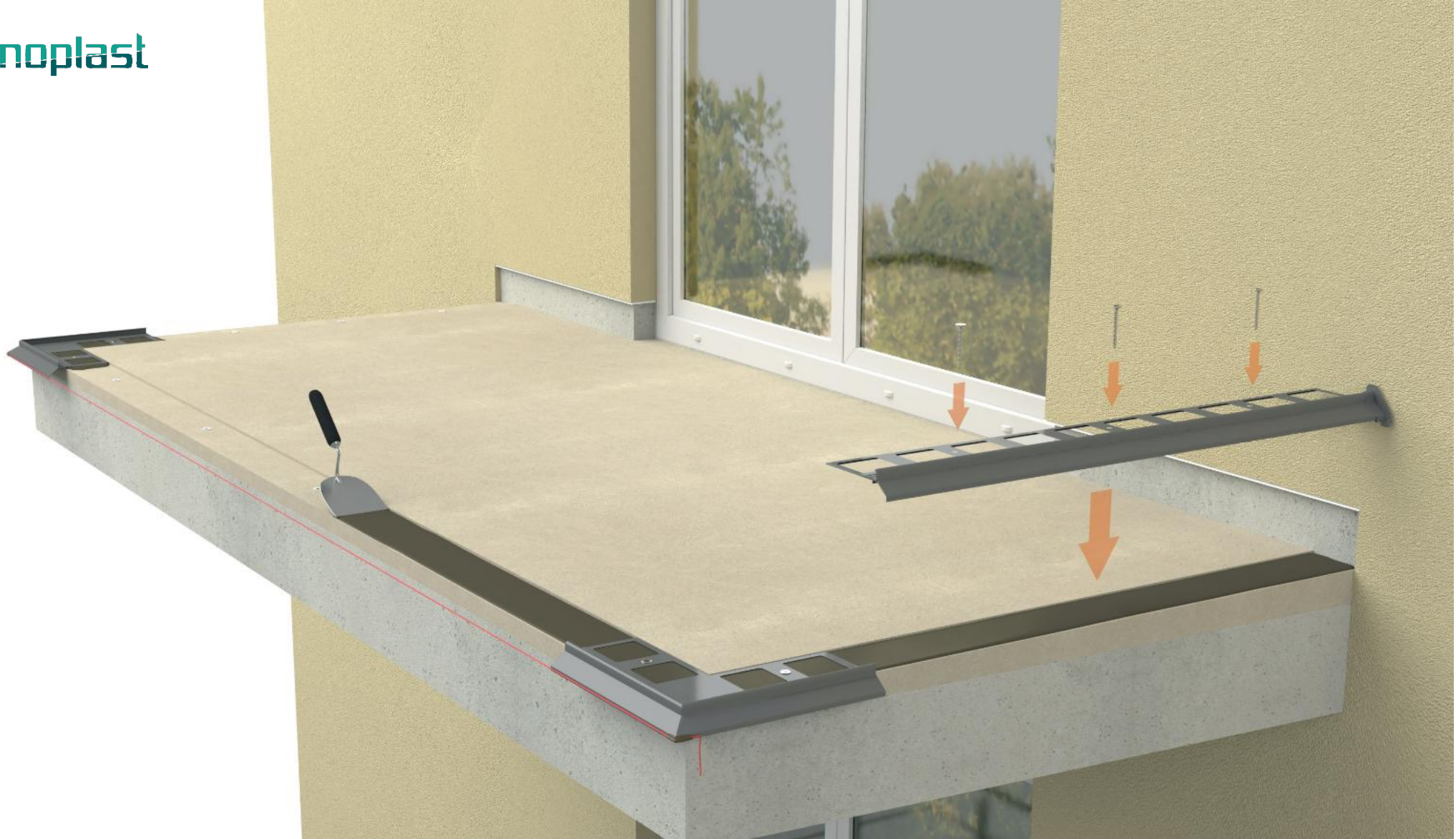
Making fixing holes in the screed

Lay **K30 drip edges** between **K30 90 external corners** and mark fixing holes positions on the screed surface. Remove the drip edging to drill fixing holes in the screed.



Fixing of K30 90 external corners

External corners should be placed on a bed of sealing slurry, and mechanically fixed using the pre-installed plastic plugs. Once the slurry has cured, tighten the plug screws as required.



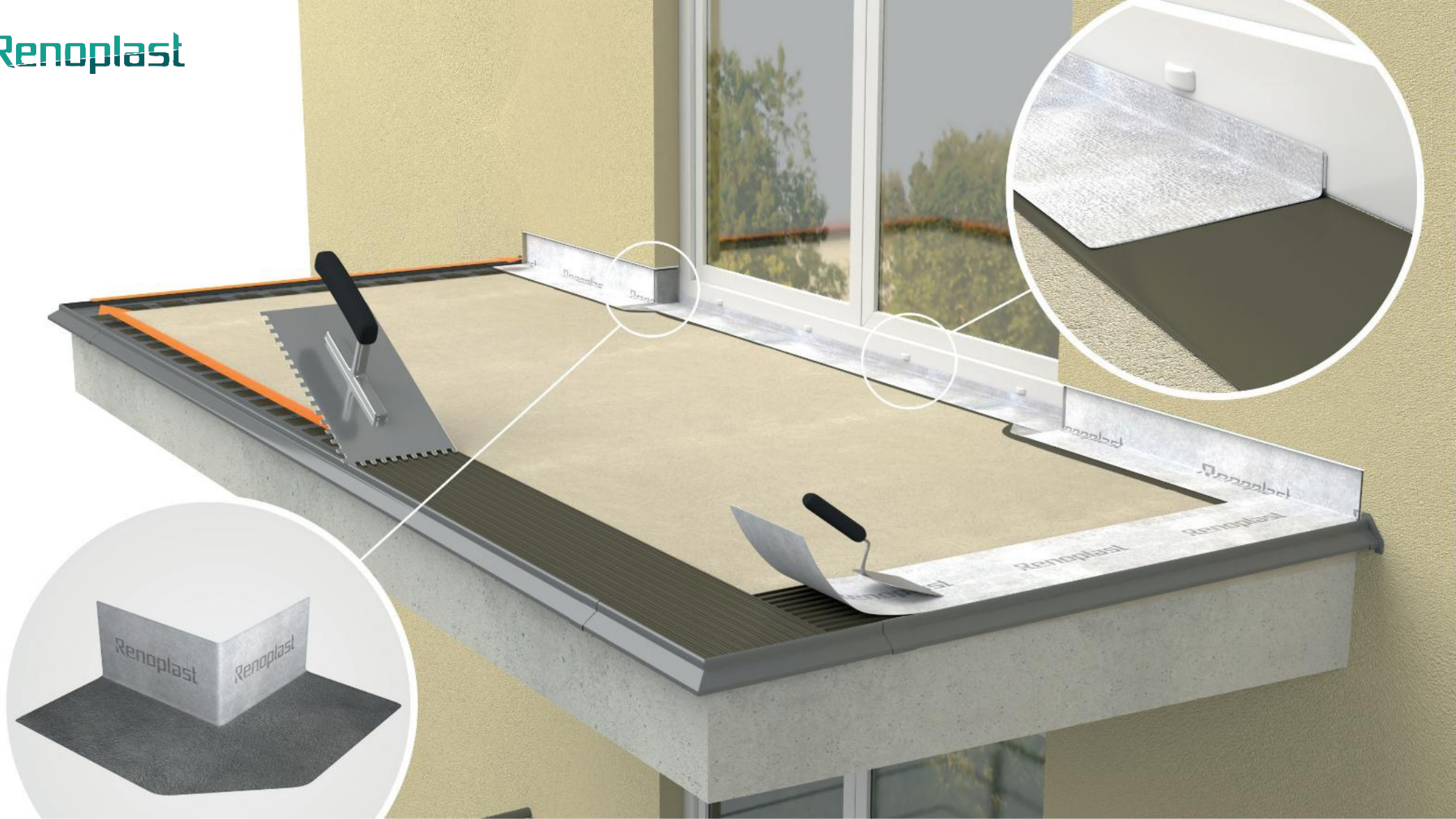
Fixing of K30 drip edges

Straight sections are fitted in the same way as corner pieces. Use a string line stretched between adjacent corners and a spirit level to ensure straight and level alignment.



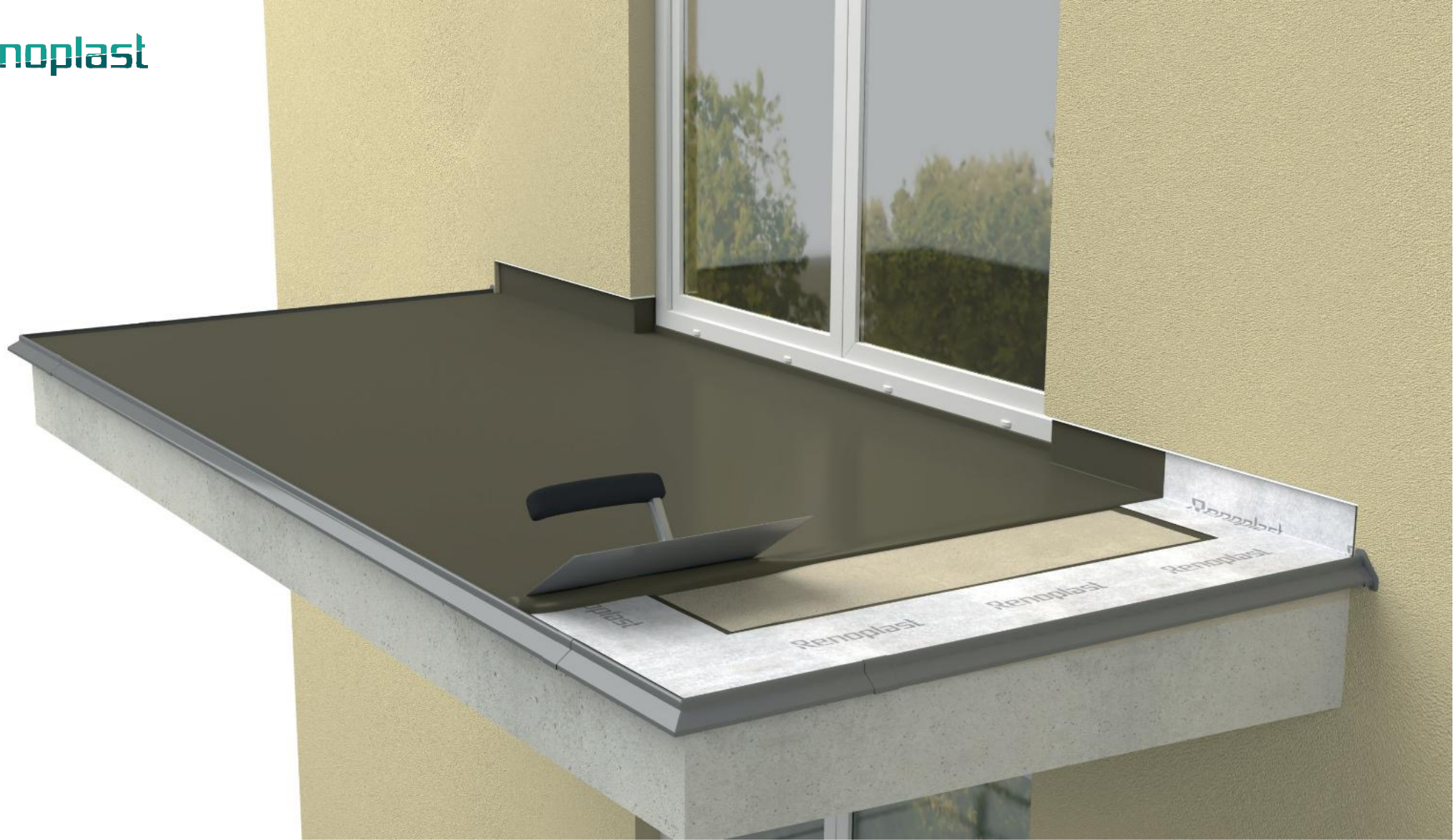
Sealing of joints and fitting LK30/LK40 drip edge clips

Fill edging joints with a flexible (e.g., polyurethane) sealant and snap the clips as shown.



Sealing drip edging and door sill joints with the floor screed

Drip edging/screed joints are sealed with **PL3 sealing tape** embedded in sealing slurry. Door sill/screed joints are sealed with **threshold sealing membrane with self-adhesive butyl strip**.



Application of sealing slurry waterproofing layer

Sealing slurry layer is placed on the screed as a floor waterproofing layer, as per the slurry manufacturer's instructions.

Renoplast



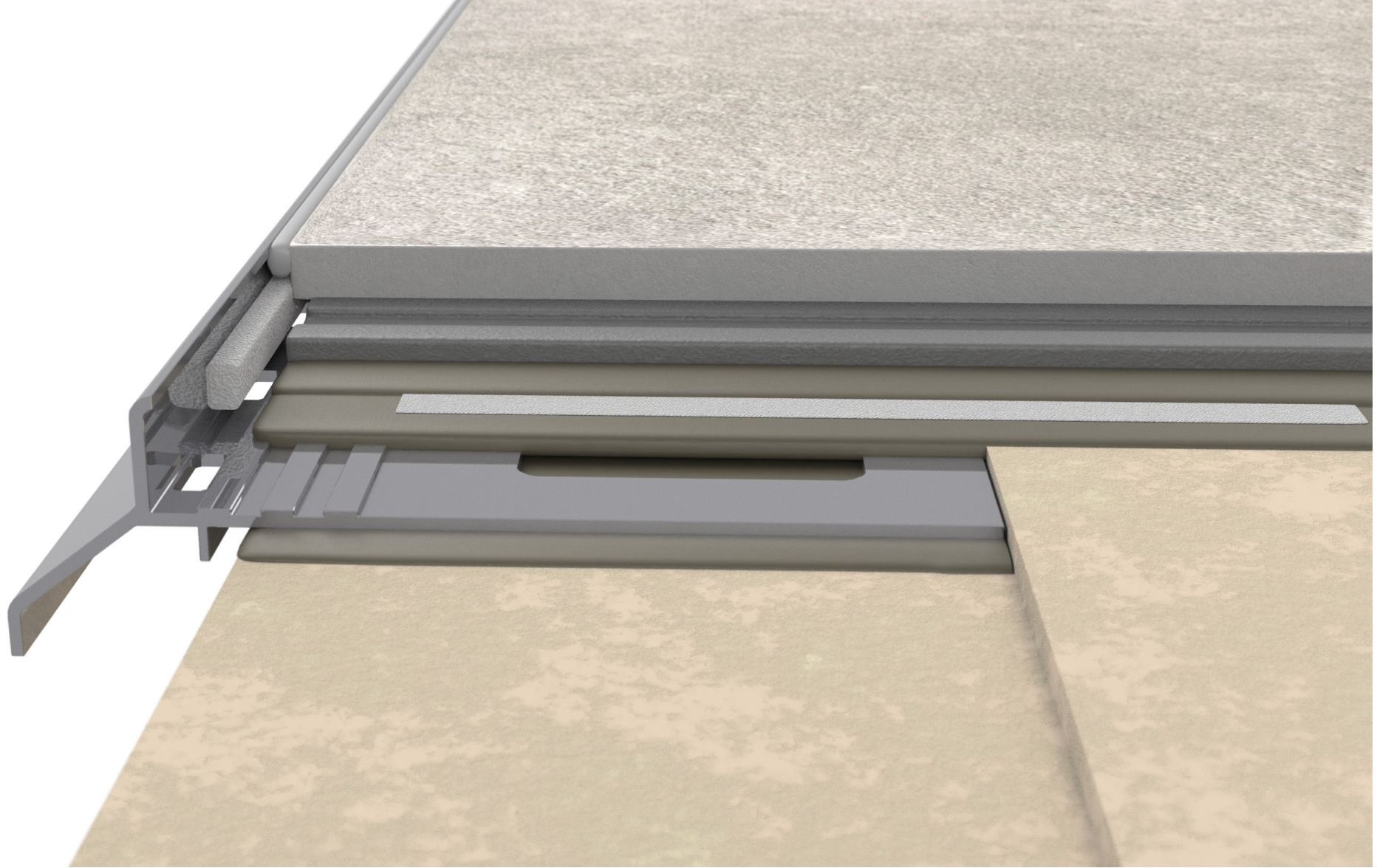
Laying porcelain pavers

Once the sealing slurry has cured lay the pavers using tile adhesive suitable for outdoor use (we recommend C2-S1/ or C2-S2). The pavers should be laid against factory bonded backing rod of **K30 drip edge**.



Sealing the floor/trim joint and other joints

First insert a 6 mm backing rod into the floor/sill and floor/skirting joints. Next apply flexible (e.g. polyurethane) sealant over the backing rod. Note that **K30 drip edges** feature a factory bonded backing rod.



NOTES:

In **K30 drip edges** the drain holes are positioned at the waterproofing layer level to ensure efficient drainage of water from the floor layers. **K30** has been designed to protect the paving edges and ensure watertight joints at eaves.



QUALICOAT
Inspired by architecture, trusted by professionals
| SEASIDE |



Renoplast

www.renoplast.pl/en