

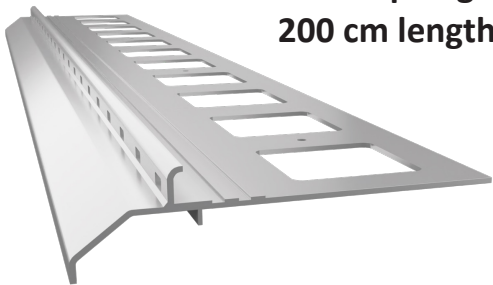
# **SIMPLE K20 system** installation guide for balconies, patios and terraces with pebblestone flooring.



# Placement of SIMPLE K20 components



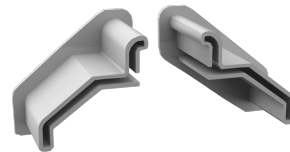
**K20 drip edge  
200 cm length**



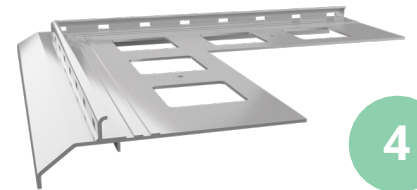
**LK20/LK20R  
drip edge clip**



**OPK20/OPK20R P+L wall  
protection end caps**



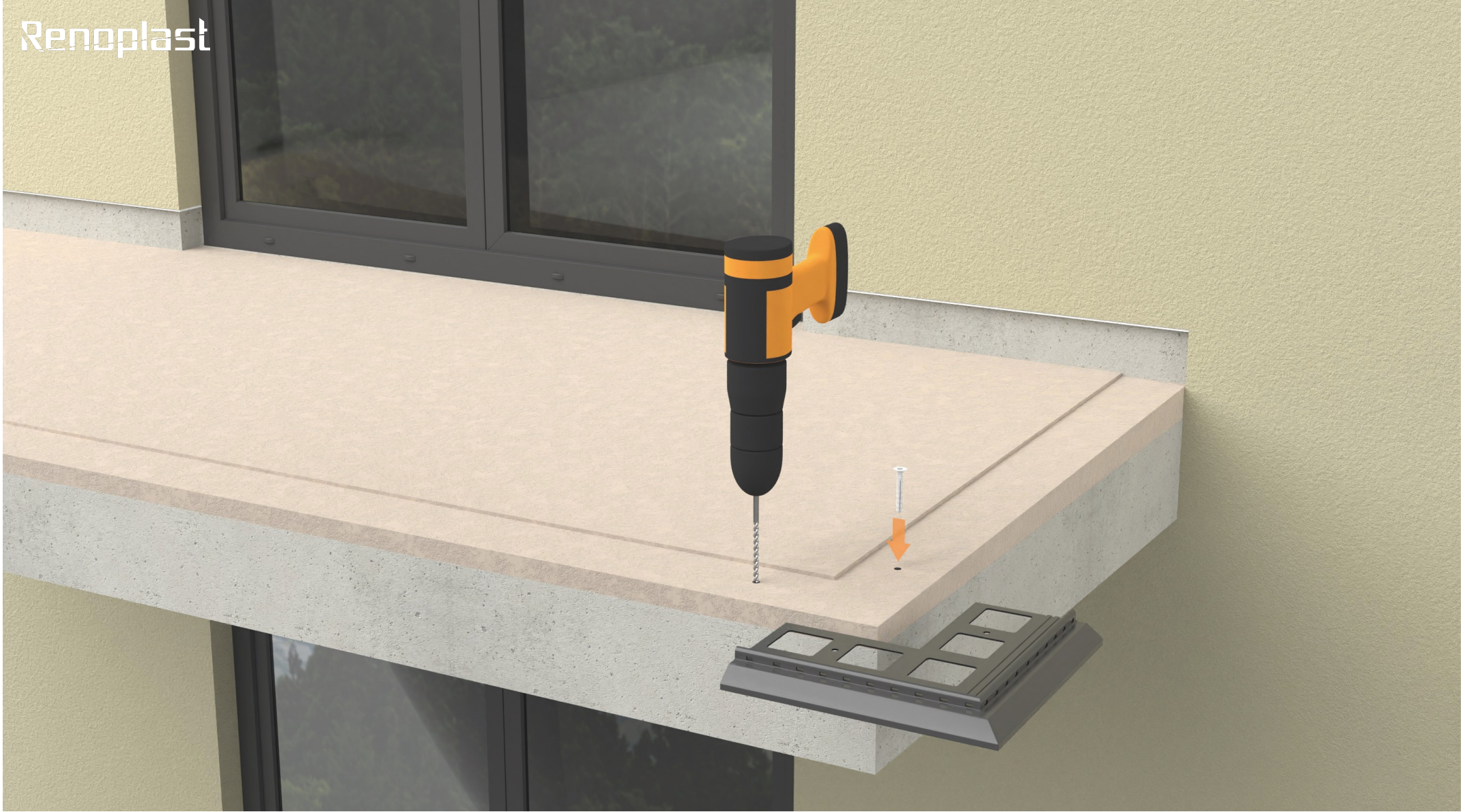
**K20 90 external  
corner**





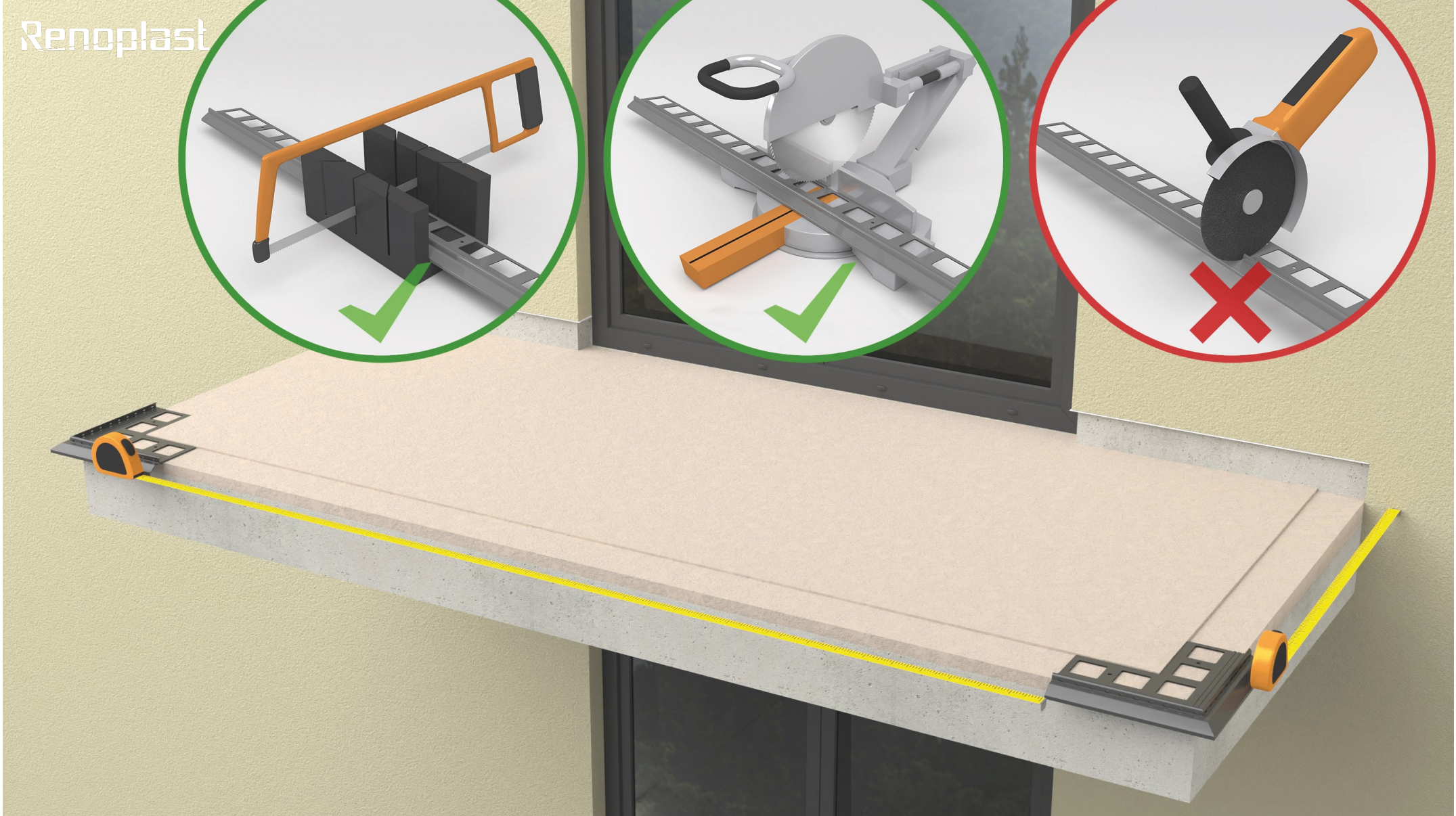
### Balcony/ terrace floor screed

The floor screed should be structurally sound and even, sloping 1.5 – 2% towards the balcony/ terrace front edge. Along the balcony/ terrace edge a 3 mm deep by 80 mm wide recess should be made in the screed to allow setting the drip edge flush with the screed top surface.



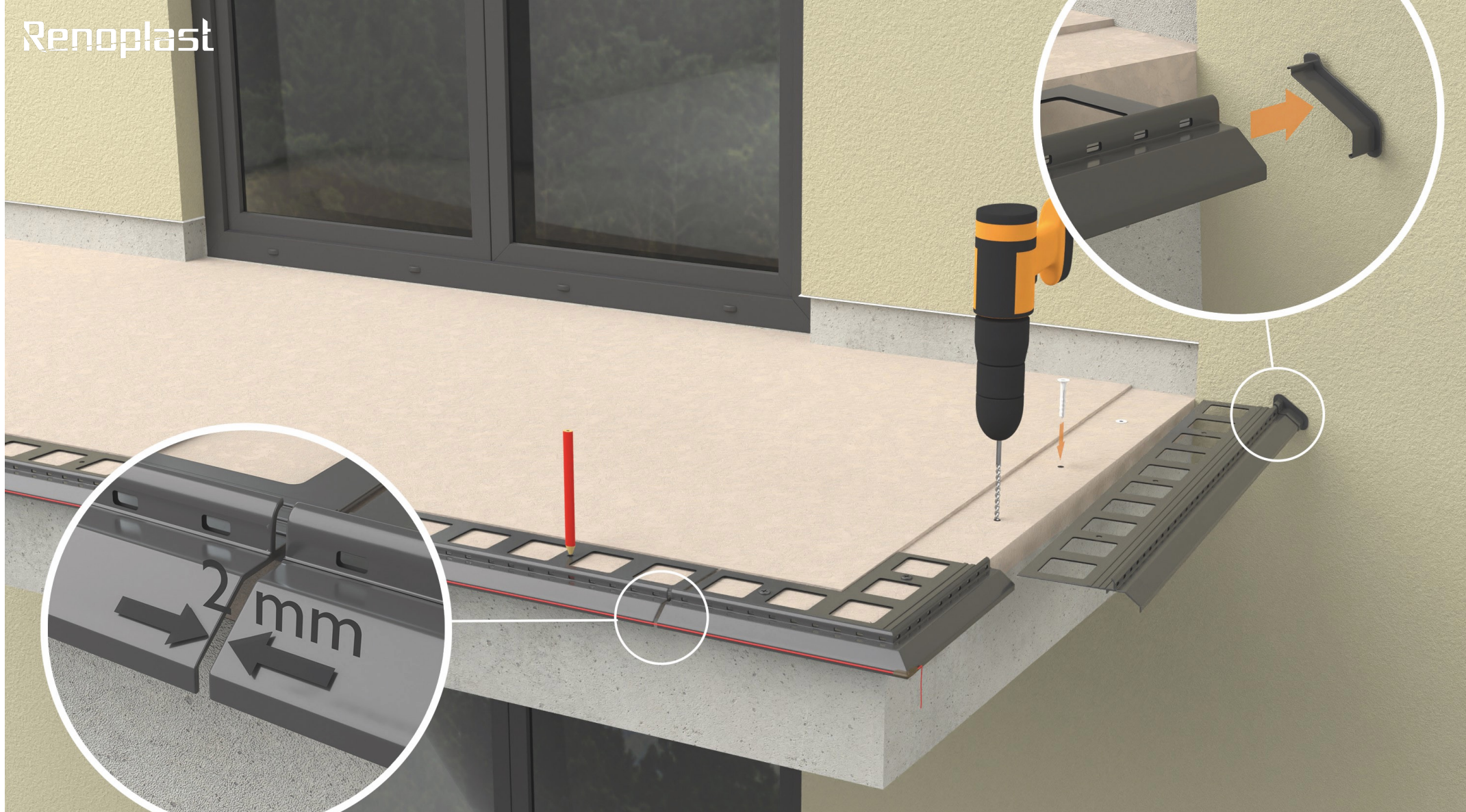
### Pre-fitting K20 90 external corners

Start the installation by pre-fitting the external corners using the supplied plastic wall plugs.



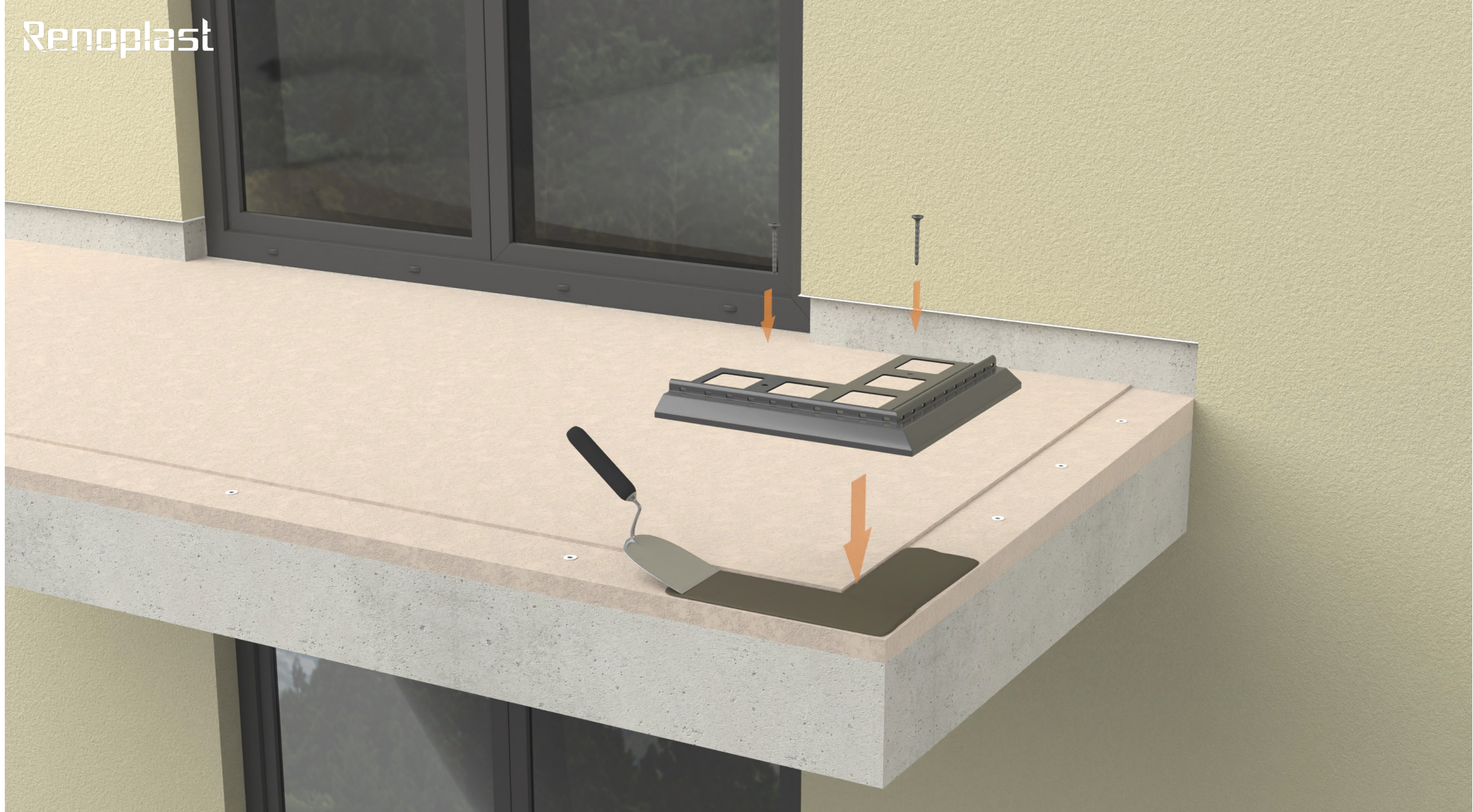
### Preparation of K20 drip edges

Measure straight lengths to cut the **K20** drip edges to the required length. Allow for ca. 2 mm wide expansion joints between adjacent drip edging sections. At walls leave sufficient space for fitting **OPK20/OPK20R** wall protection end caps. For cutting use a metal handsaw or a circular saw equipped with an aluminium cutting disc. Other tools may damage the paint coat, which is considered unacceptable.



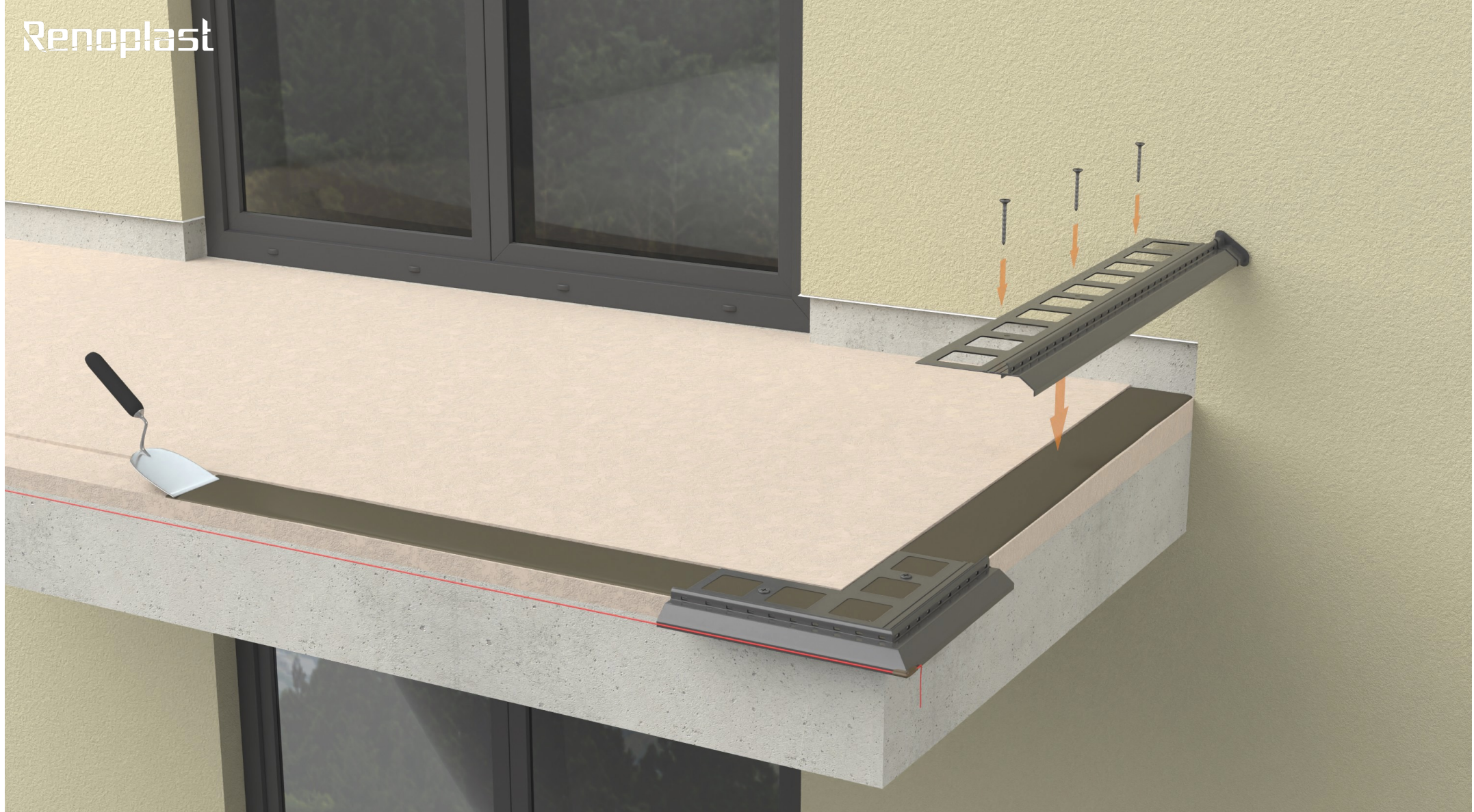
### Making fixing holes in the screed

Lay **K20 drip edges** between the pre-fitted **K20 90 external corners** and mark fixing holes positions. Remove the drip edging to drill the fixing holes in the screed.



### Final fixing of K20 90 external corners

External corners should be bedded on the applied sealing slurry and mechanically fixed using the pre-installed plastic plugs. Once the slurry has cured tighten the plug screws as required.



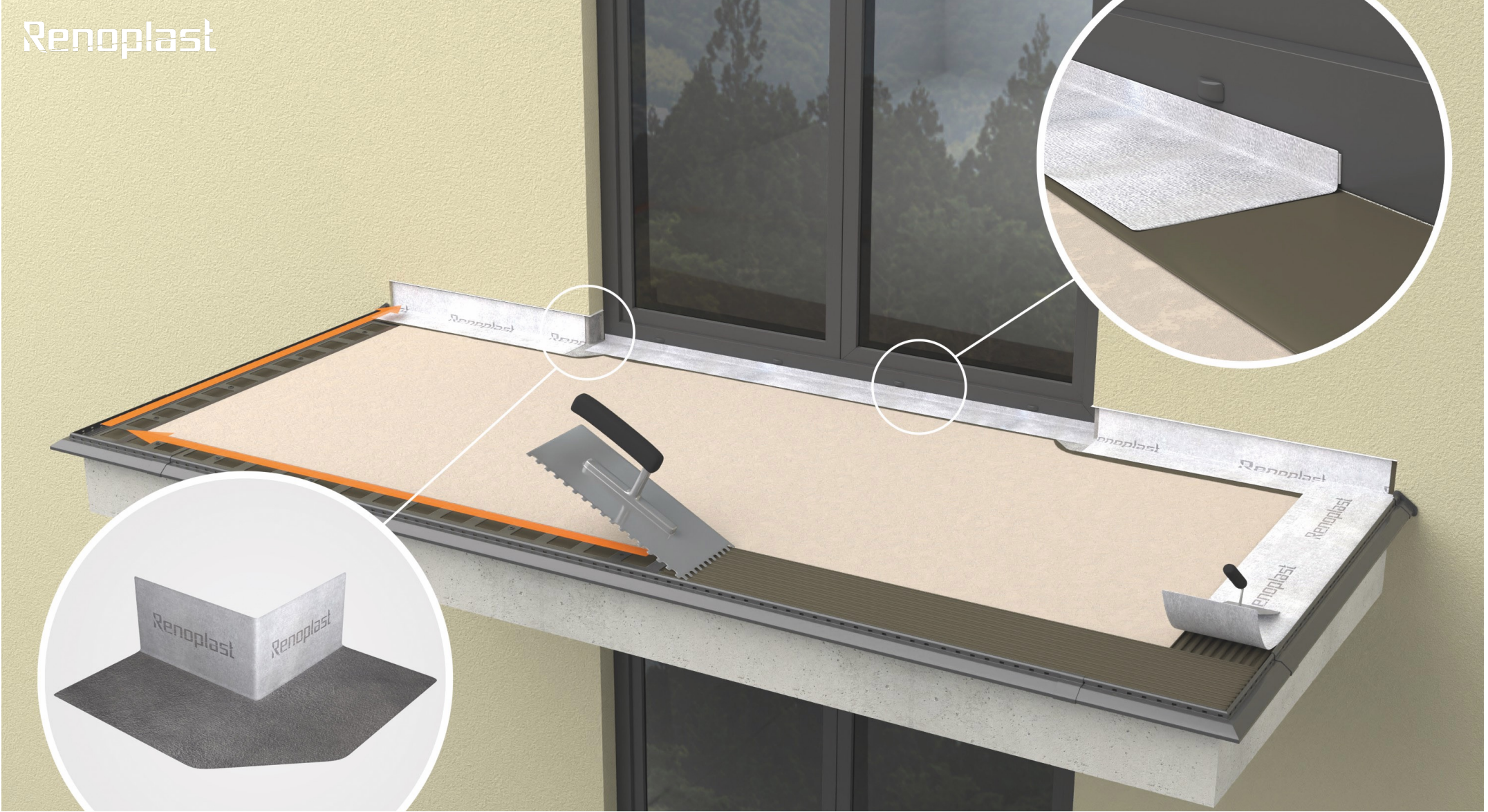
### Preparation of K20 drip edges

Straight sections are fitted in the same way as corner pieces. Use a string line stretched between adjacent corners and a spirit level to ensure straight and level alignment.



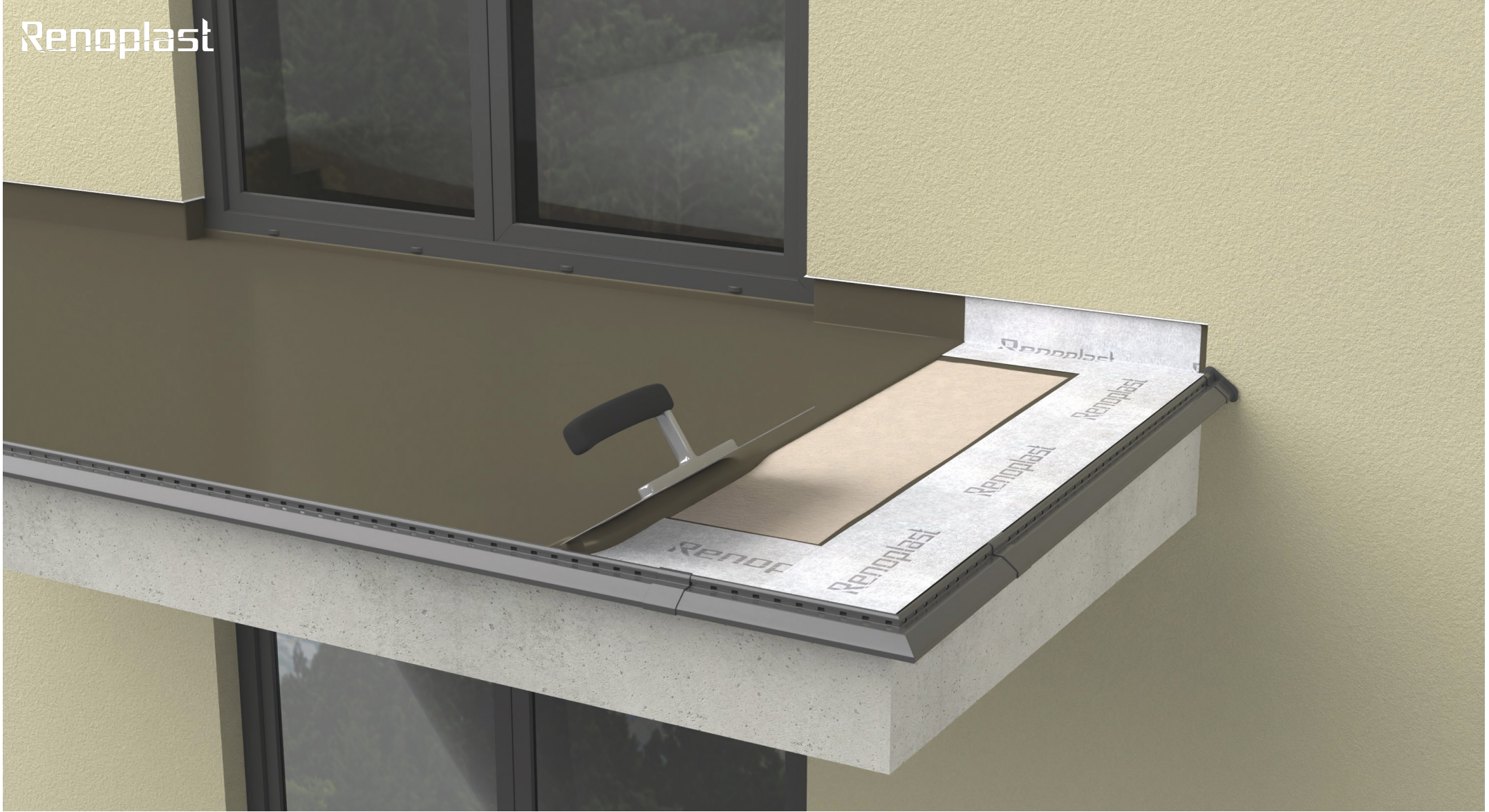
**Sealing of joints and fitting LK20/LK20R drip edge clip over joints**

Fill edging joints with a flexible, (e.g., polyurethane) sealant and snap the clips as shown.



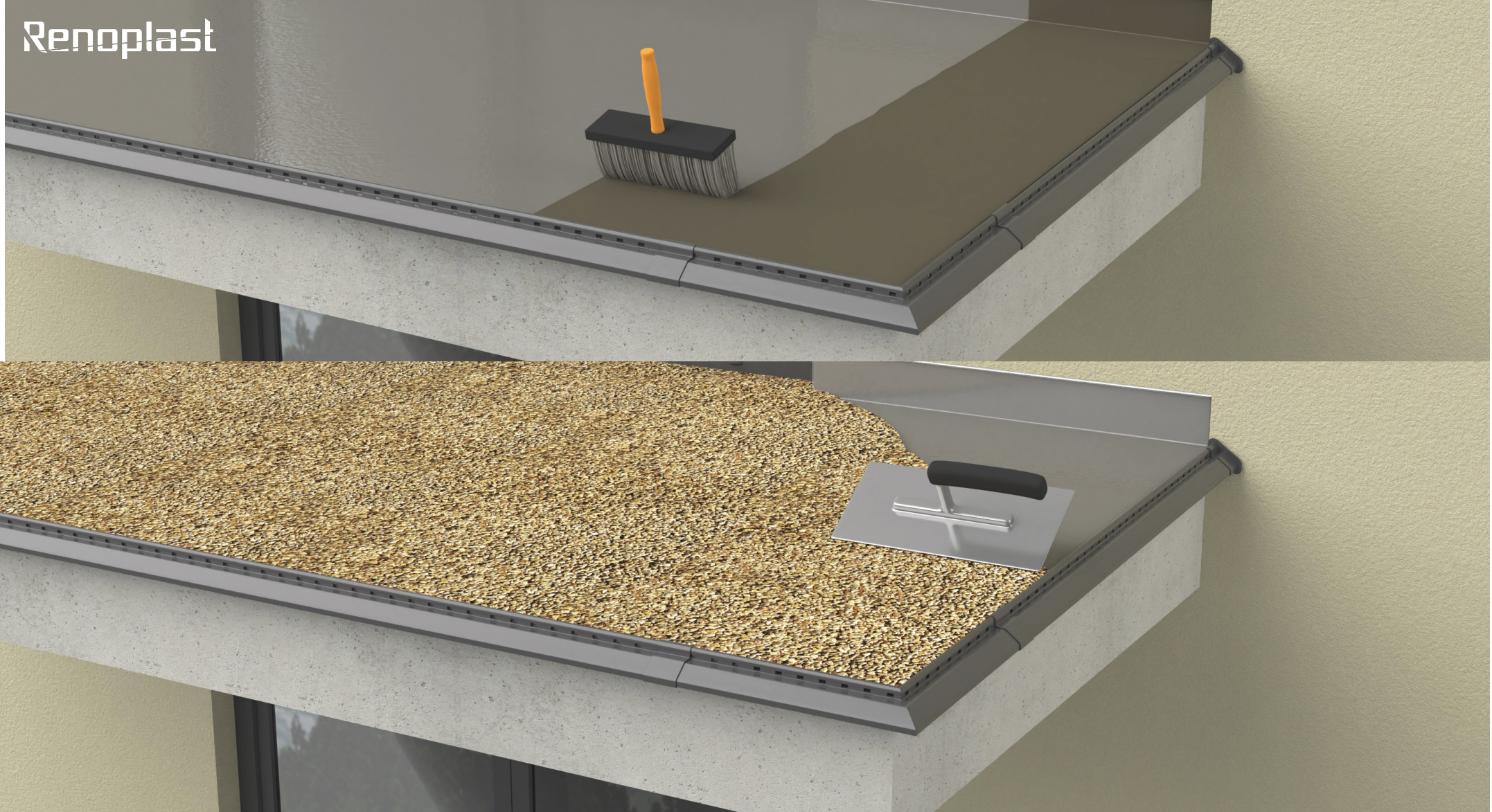
## Bonding of K20 edging with the screed

Drip edging is bonded to the screed by means of a layer of nonwoven fabric or mesh embedded in resin, or with a sealing tape embedded in the slurry. Follow the manufacturer's recommendations.



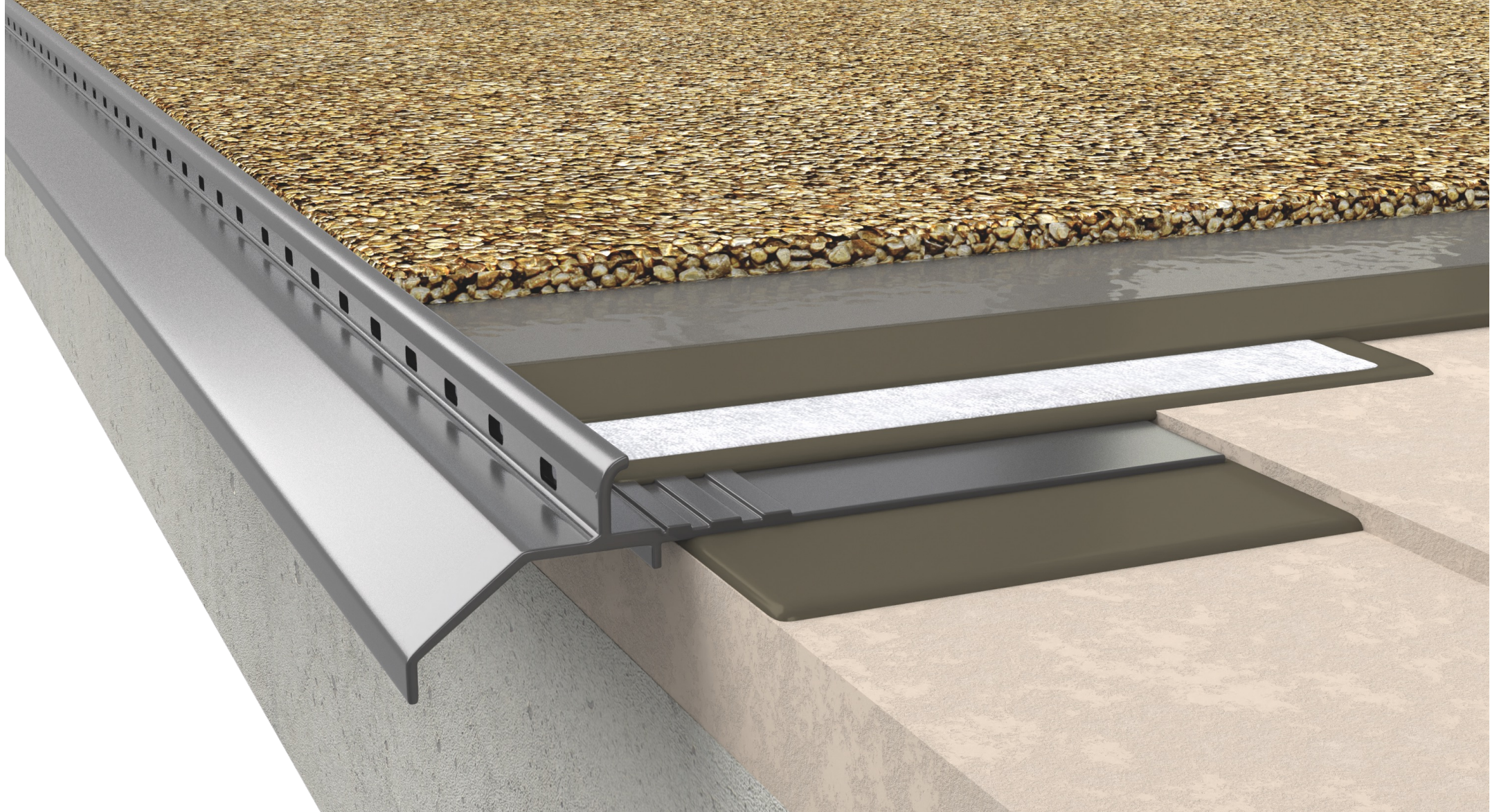
## Waterproof sealant application

Apply waterproof sealant (sealing slurry or resin) all over the screed surface, using a roller or notched spreader, as per the installation procedure.



### Laying resin-bound blend

Resin-bound blend may be laid once the waterproof sealant has cured. Follow the resin-bound blend installation procedure.



## NOTES:

**K20 drip edge** has a 10 mm high upstand along the front edge to suit pebblestone flooring thickness. The front side features bottom drain holes to ensure efficient drainage of moisture from the resin floor layers. This guide gives some general recommendations for pebblestone flooring systems. Since different systems are available in the market, always follow the manufacturer's guidelines.



**QUALICOAT**  
Inspired by architecture, trusted by professionals  
| SEASIDE |



**Renoplast**

[www.renoplast.pl/en](http://www.renoplast.pl/en)