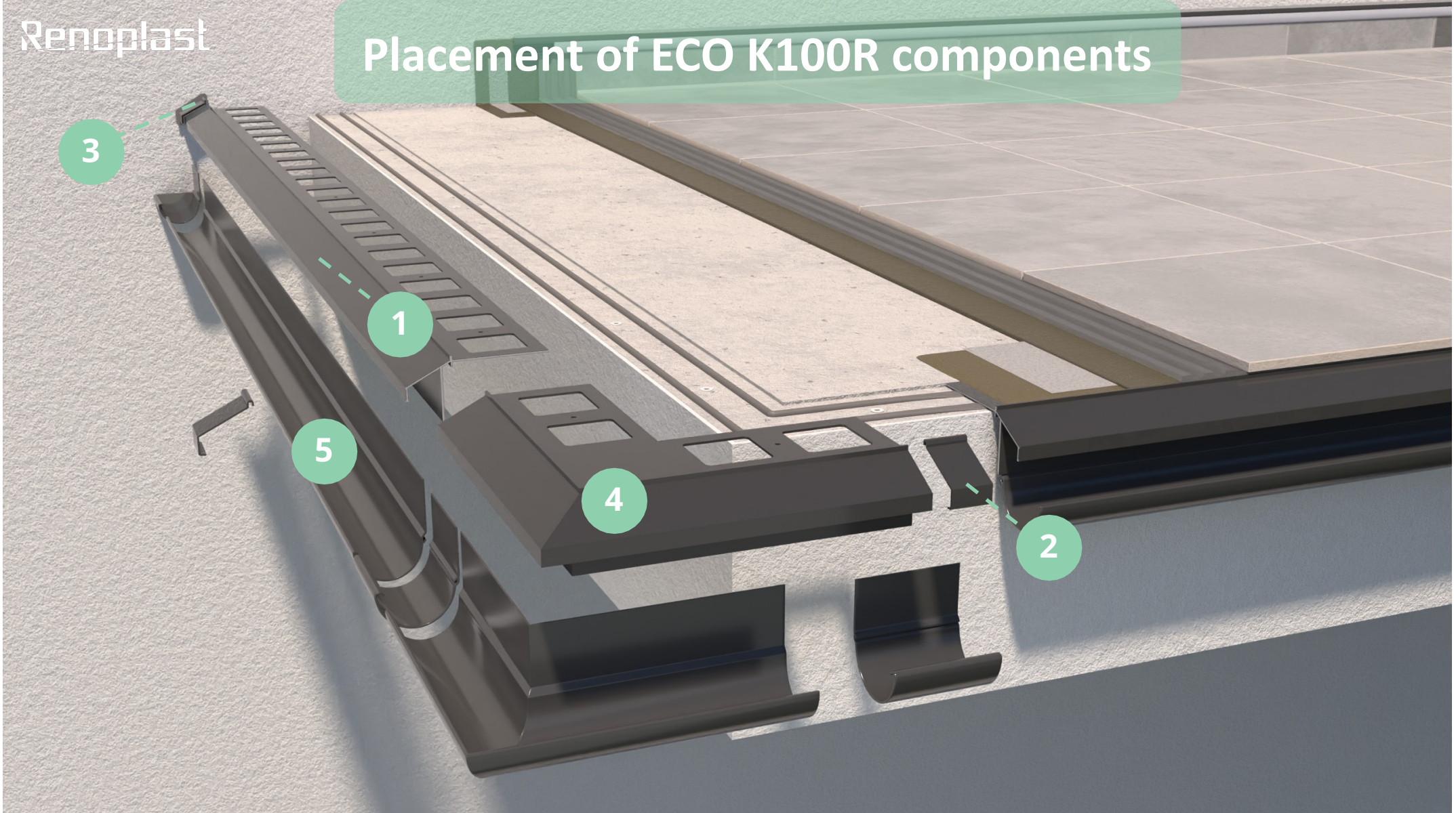


ECO K100R system installation guide for balconies, patios and terraces surfaced with porcelain pavers fixed with adhesive



Placement of ECO K100R components



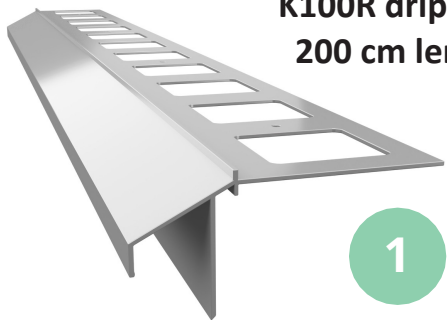
**K100R drip edge
200 cm length**

**LK10/LK100/
LK10R/LK100R
drip edge clip**

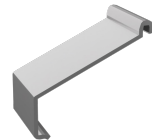
**OPK10/OPK100/OP10R/
OP100R R+L
wall protection end caps**

**K100R 90 external
corner**

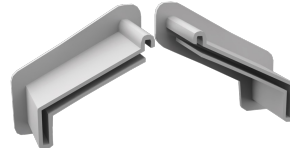
R50 round gutter



1



2



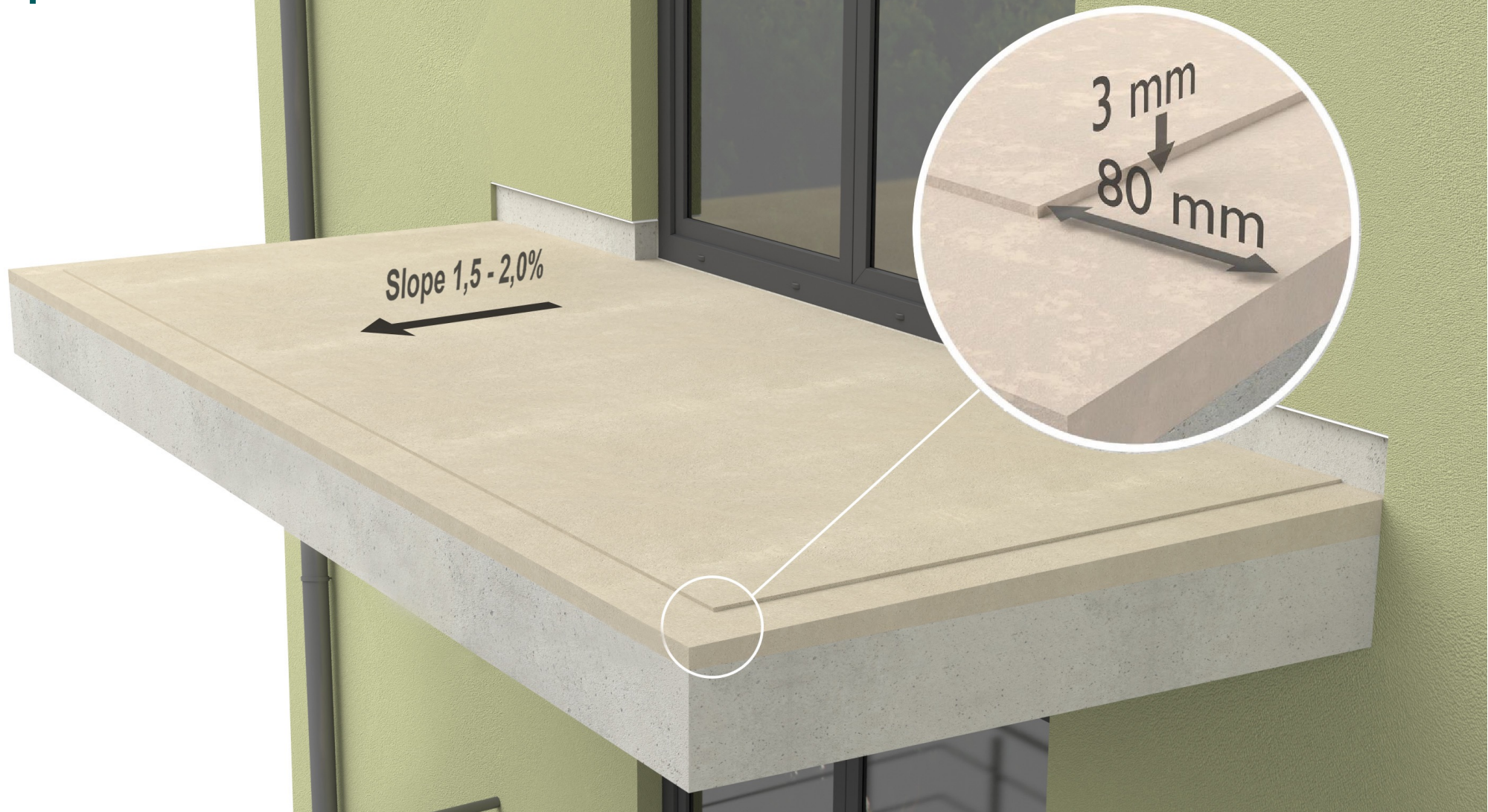
3



4

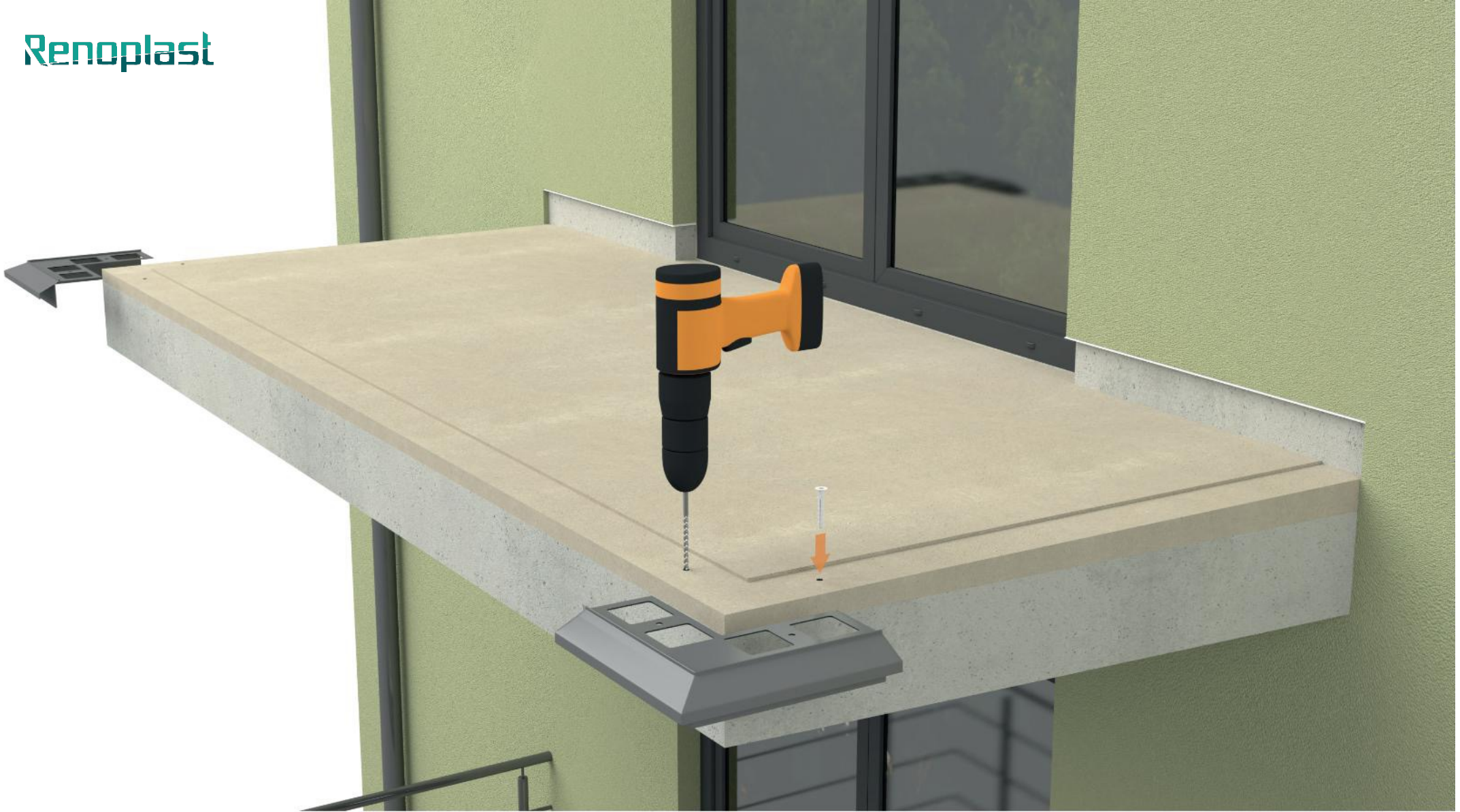


5



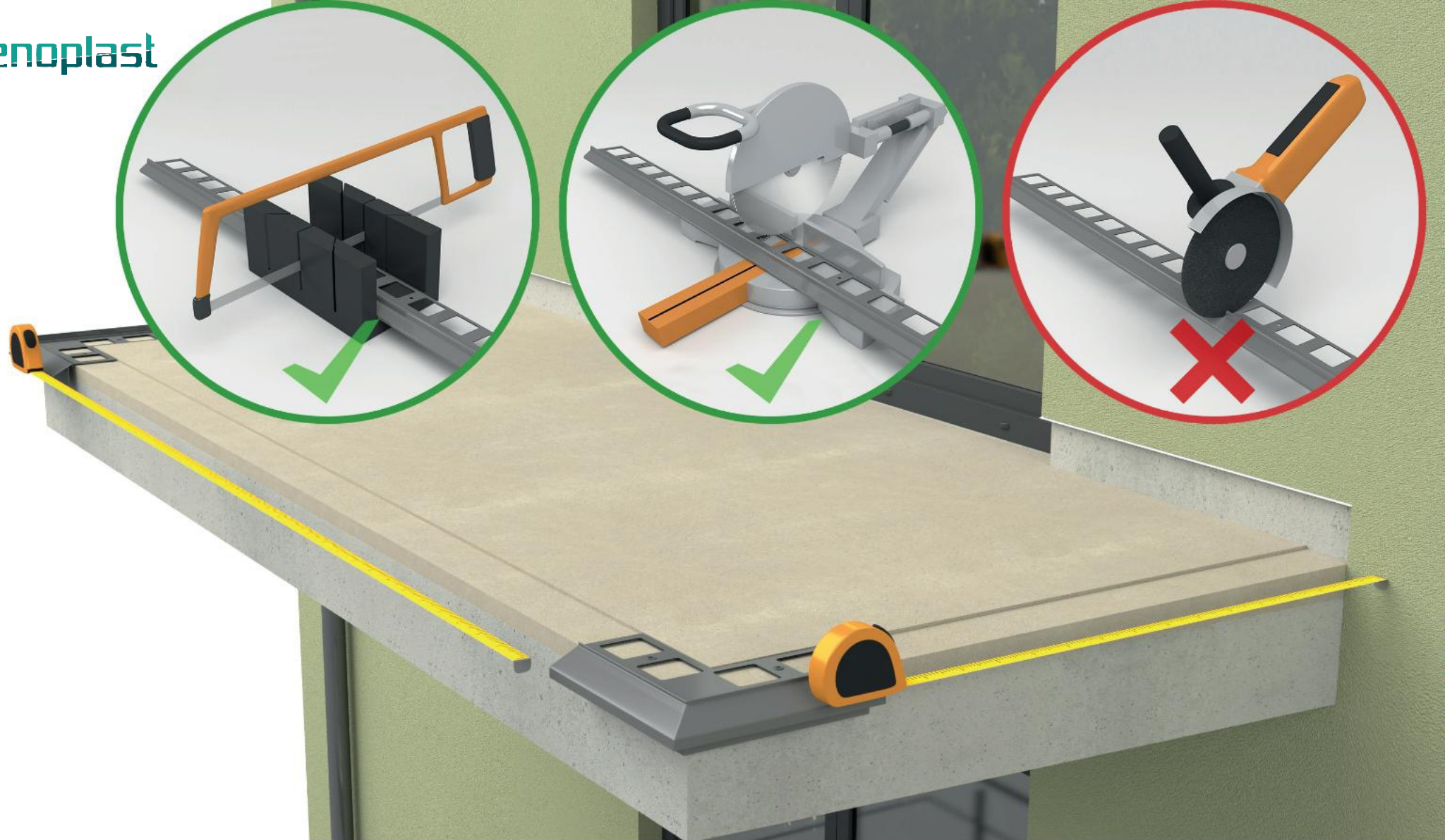
Balcony/terrace floor screed

The floor screed should be structurally sound and even, sloping 1.5 – 2% towards the balcony/terrace front edge. Along the balcony/terrace edge a 3 mm deep by 80 mm wide recess should be made in the screed to allow setting the drip edge flush with the screed top surface.



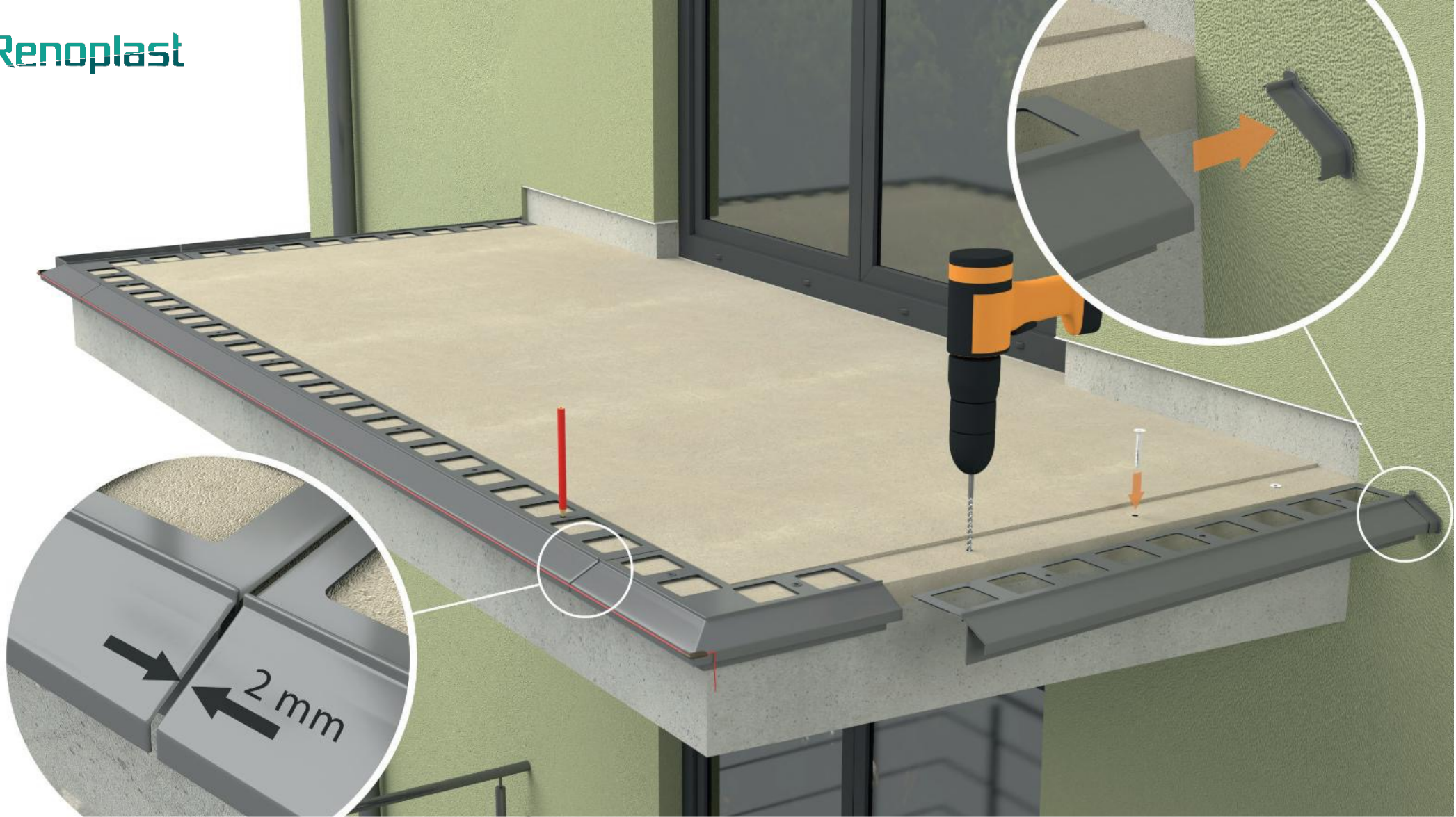
Pre-fitting K100R 90 external corners

Start the installation by pre-fitting the external corners using the supplied plastic wall plugs.



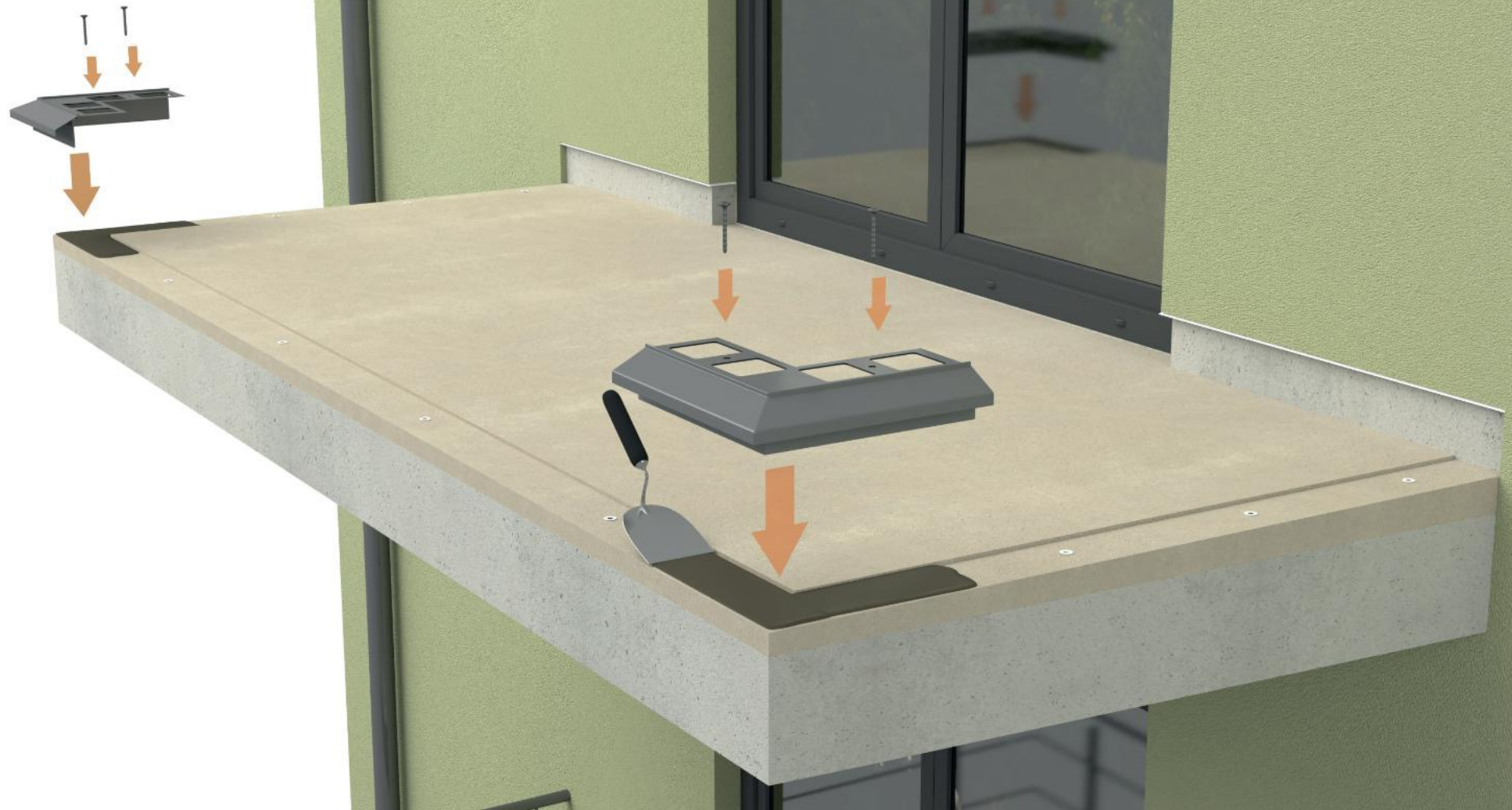
Preparation of K100R drip edges

Measure straight lengths to cut the straight sections to the required length. Allow for ca. 2 mm wide expansion joints between adjacent drip edging sections. At walls leave sufficient space for fitting **OPK10/OPK10R/OPK100/OPK100R wall protection end caps**. For cutting use a metal handsaw or a circular saw equipped with an aluminium cutting disc. Other tools may damage the paint coat, which is considered unacceptable



Making fixing holes in the screed

Lay **K100R drip edges** between the pre-fitted **K100R 90 external corners** and mark fixing holes positions. Remove the drip edging to drill fixing holes in the screed.



Fixing of K100R 90 external corners

External corners should be placed on a bed of sealing slurry and mechanically fixed using the pre-installed plastic plugs. Once the slurry has cured, tighten the plug screws as required.



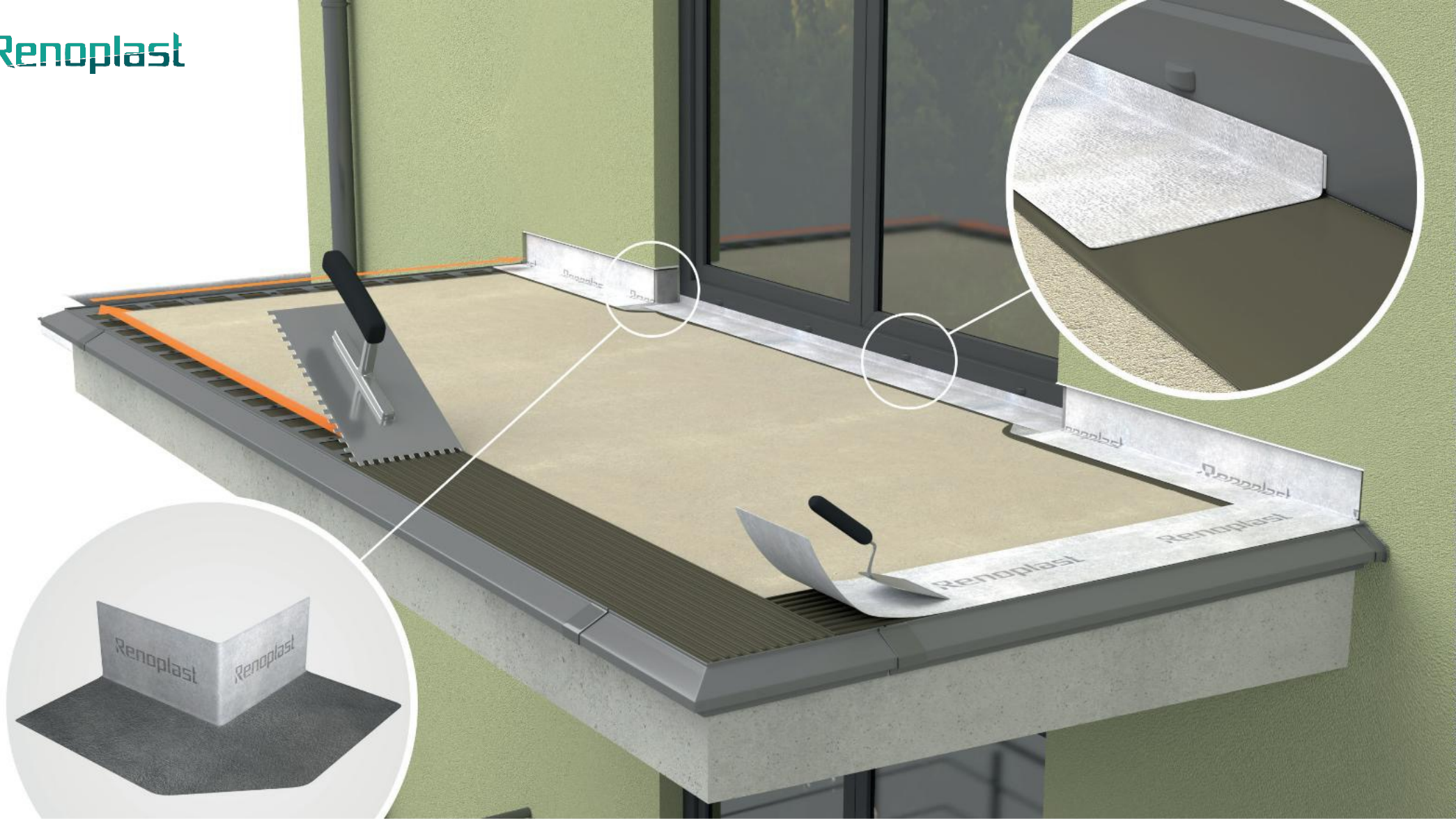
Fixing of K100R drip edges

Straight sections are fitted in the same way as corner pieces. Use a string line stretched between adjacent corners and a spirit level to ensure straight and level alignment.



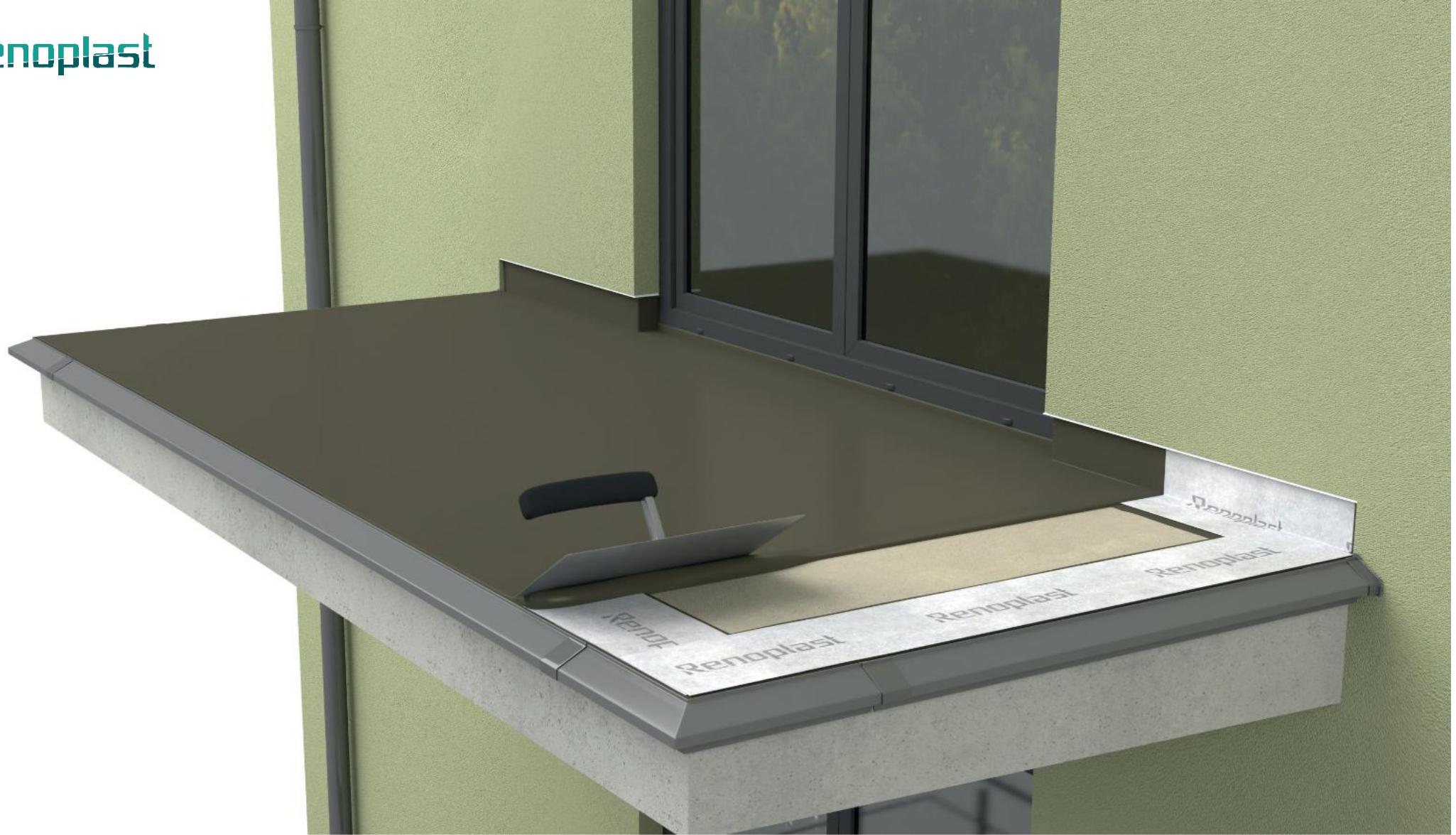
Sealing of joints and fitting LK10/LK10R/LK100/LK100R drip edge clips

Fill edging joints with a flexible (e.g., polyurethane) sealant and snap the clips as shown.



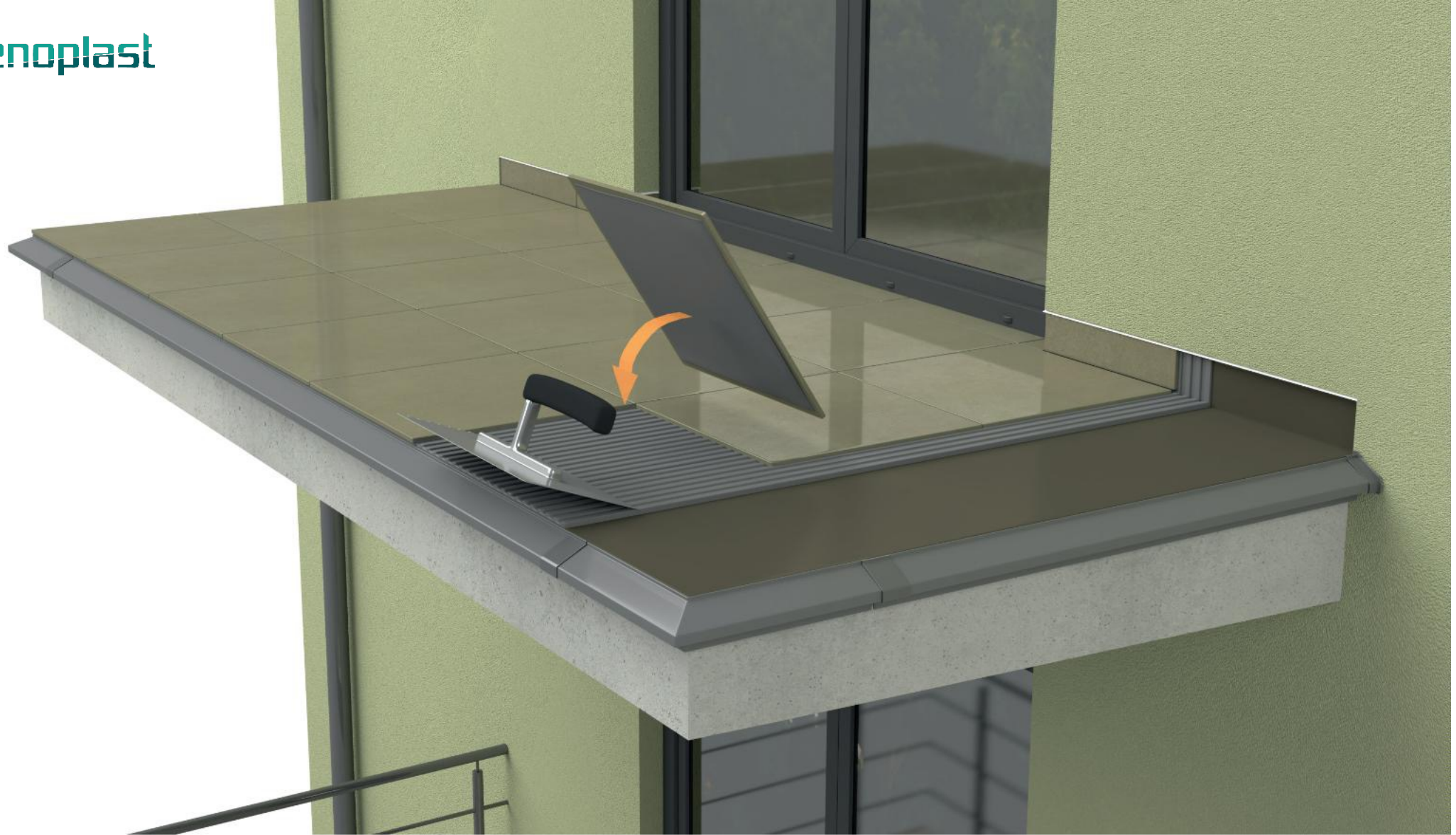
Sealing drip edging and door sill joints with the floor screed

Drip edging/screed joints are sealed with **PL3 sealing tape** embedded in sealing slurry. Door sill/screed joints are sealed with **threshold sealing membrane with self-adhesive butyl strip**.



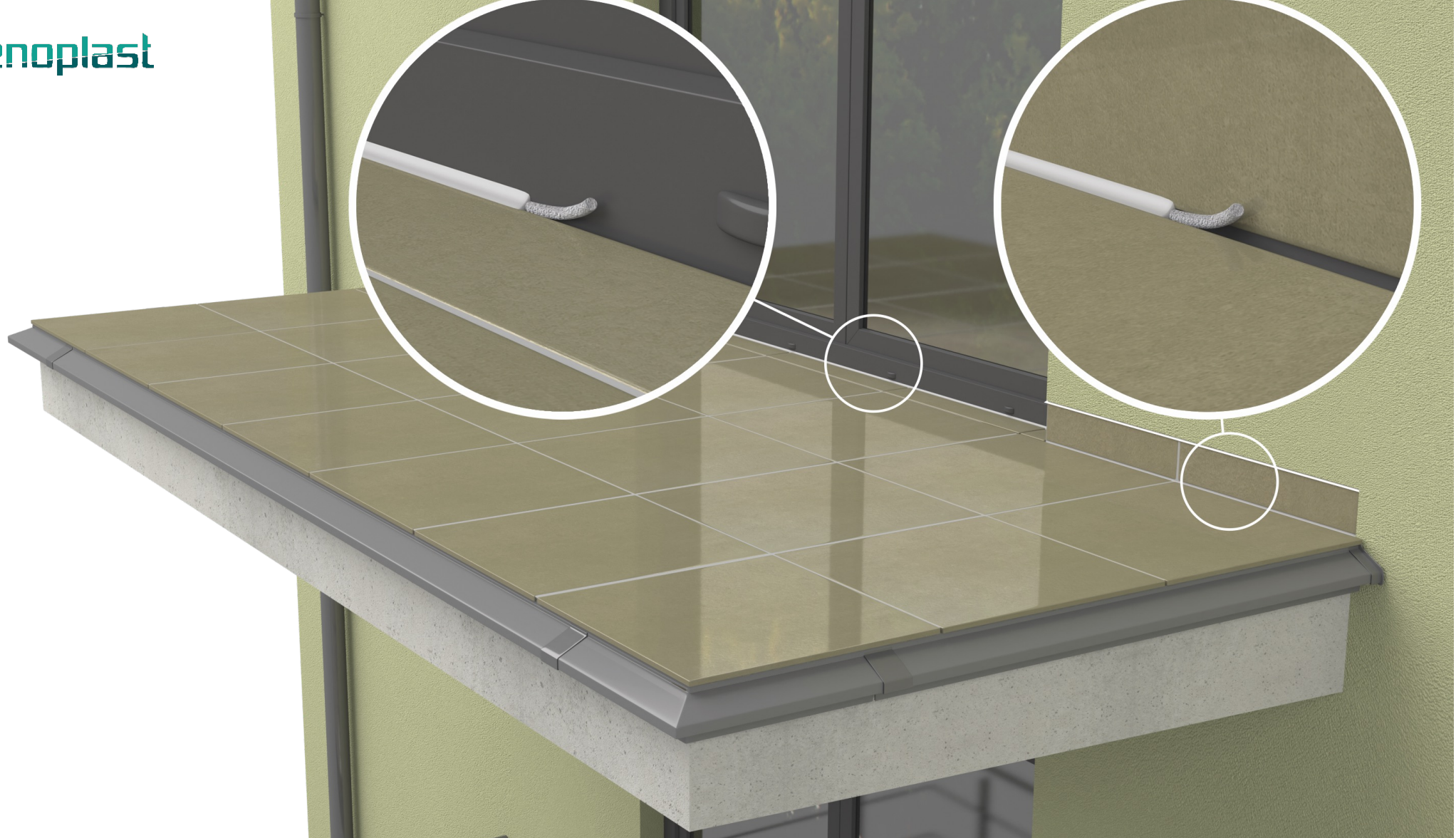
Application of sealing slurry waterproofing layer

Sealing slurry layer is placed on the screed as a floor waterproofing layer, as per the slurry manufacturer's instructions.



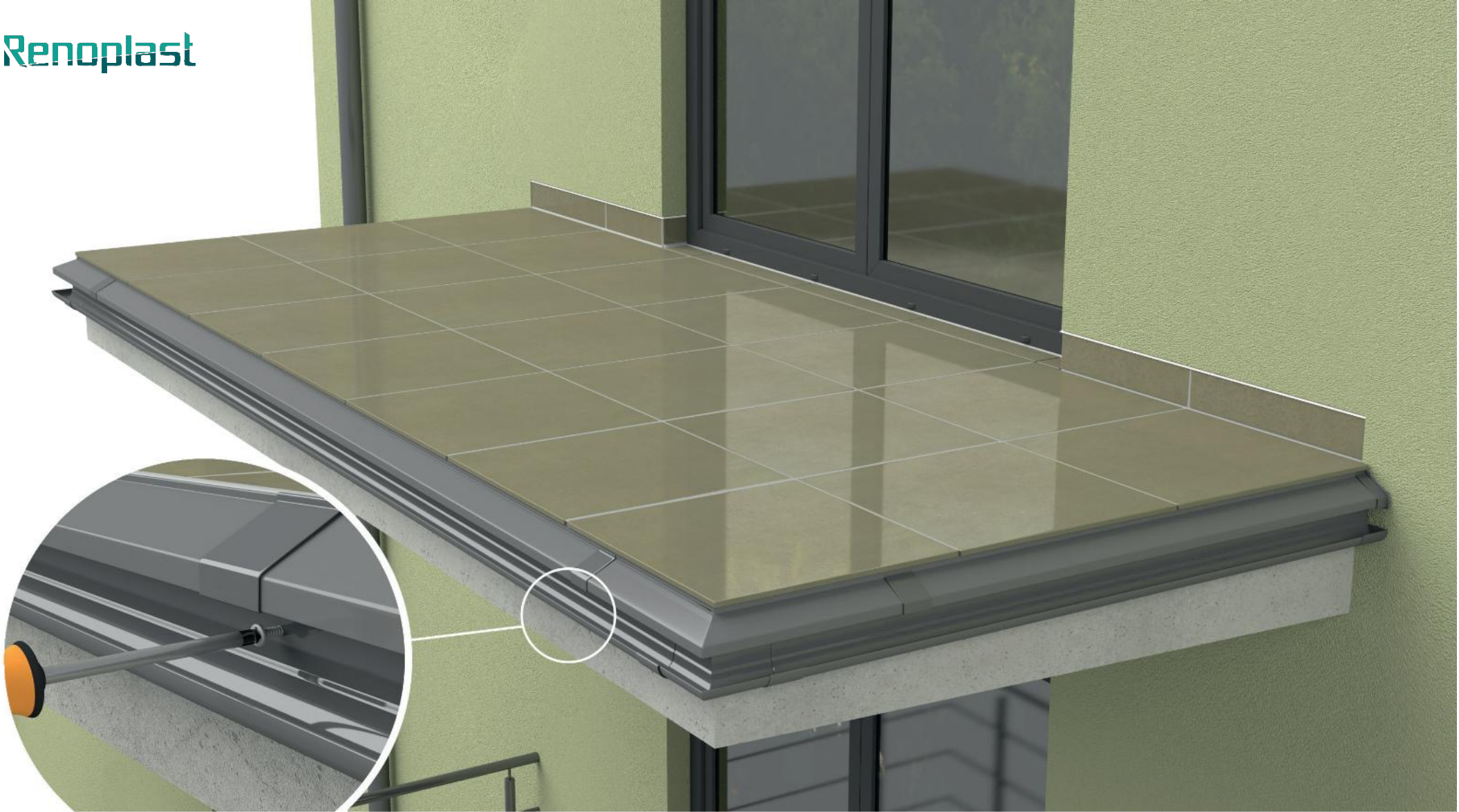
Laying porcelain pavers

Pavers are laid on cured sealing slurry. Use tile adhesive suitable for outdoor use (we recommend C2-S1/ C2-S2).



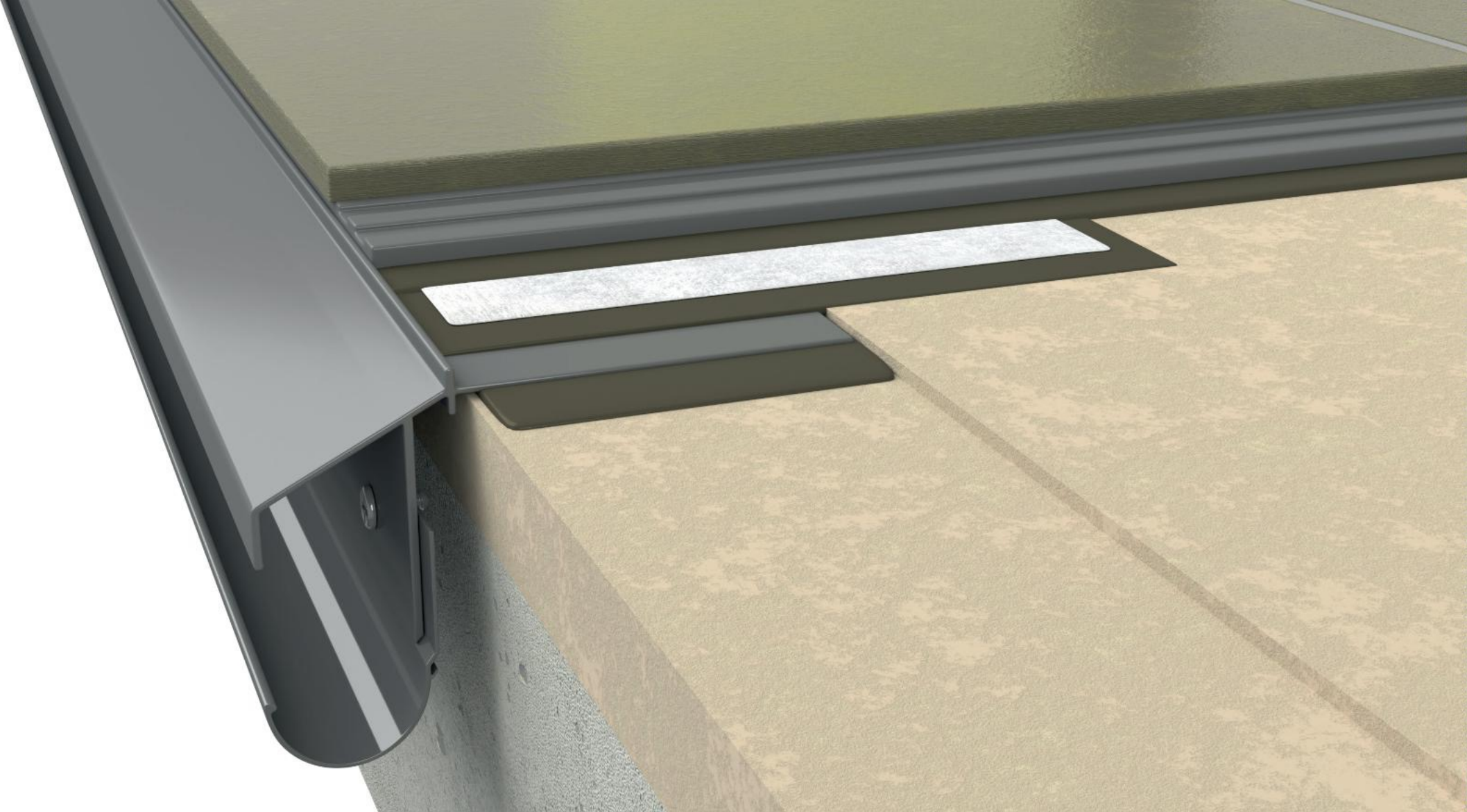
Sealing of door sill and skirting trim joints and floor expansion joints

First insert a 6 mm backing rod into the floor/sill and floor/skirting joints and into floor expansion joints. Next apply a flexible (e.g., polyurethane or MS polymer) sealant over the backing rod. **Do not seal the gap between pavers and K100R trim.**



Installation of Renoplast R50 aluminium gutter

R50 aluminium gutters are fixed directly to the fascia cover under **K100R drip edge**. Both the straight segments and angles should be fixed with the supplied self-drilling fasteners. The straight segments and gutter angles are connected with **R50 gutter unions**.



NOTES:

K100R drip edge has a 3 mm high upstand, corresponding to a standard thickness of a tape reinforced sealing slurry layer. **K100R drip edge** features a sloping edge for efficient evacuation of water from balcony/terrace floors.



QUALICOAT
Inspired by architecture, trusted by professionals
| SEASIDE |



Renoplast

www.renoplast.pl/en